

# HOSPICE & COMMUNITY CARE 2019 IMPACT REPORT



**HOSPICE**  
& COMMUNITY CARE

40  
years  
of care

# YOUR CARE. YOUR COMMUNITY. YOUR HOSPICE.

Dear Hospice Supporters:

This year Hospice & Community Care is celebrating 40 years of providing care and comfort for people in our community. As the organization enters 2020 from a position of strength and growth, it would not have been possible without a strong 2019. While 2020 marks a milestone anniversary, 2019 was a record-breaking year with numerous milestones of its own, many of which are featured throughout this Impact Report. Thanks to the care and comfort provided by Hospice employees, volunteers and the generosity of the community, last year was extraordinary.



In 2019, we cared for an average census of 525 patients each day through Hospice Care and Supportive Care, an increase of 3.8% from 2018. While this was a record for the organization, Hospice staff continued to provide quality personalized care and comfort to help all patients and families live better with serious illness. Hospice & Community Care's employees and volunteers go above and beyond each day to meet the needs of each patient and family. It is because of their dedication that the organization is able to celebrate 40 years of service.

As we cared for an increased number of patients and families your gifts made a significant impact. By making a gift to Hospice & Community Care you gave patients access to a nurse 24/7; a wife time to spend with her husband in the Bob Fryer & Family Inpatient Center; a child the chance to attend our grief camp and so much more. Whether you gave for the first time or you are an annual supporter, thank you for making a difference. Throughout this Impact Report you will learn how your dollars are having a far reaching, lasting impact.

Hospice & Community Care anticipates new opportunities to continue its mission in 2020. The organization is excited for what this year has to bring and is grateful for a successful 2019. It is because of the community that we have been able to grow and provide the best end-of-life care for 40 years.

Thank you for your support!

Steve Knaub  
President & CEO

## 15,856

Total number of patients and families served

## MISSION

To provide personalized care and comfort to help patients and families live better with serious illness through end of life.

## VISION

Every person living in our community will receive the care and compassion they need while coping with serious illness, facing end of life, or experiencing the loss of a loved one.

## OUR VALUES

We value people and treat everyone with compassion, care, respect and courtesy.  
We value the comfort and dignity of our patients, their families and their caregivers.  
We value integrity, honesty and ethical behavior.  
We value teamwork, open communication, and mutual respect for each other.

## 2019 BOARD OF DIRECTORS

### OFFICERS

Chair – Christopher Stump, Esq., Saxton & Stump

Vice Chair – Gil Sager, Edward Jones, Retired

Treasurer – William “Terry” Burke, Sageworth Trust, Retired

Secretary – Jim Stuccio, Penn Medicine/Lancaster General Health

Karen Biondolillo, The High Companies, Inc.

Thomas S. Buter, Groff Funeral & Cremation Services

Michael K. Callahan, Benchmark Construction Company

Stephanie Carfley, McNees, Wallace & Nurick, LLC

Geoffrey W. Eddowes, Penn Medicine/Lancaster General Health

Robert L. Fryer, Jr., RBC Wealth Management

Leslie Gorbey, Court of Common Pleas Judge, Retired

Dennis Griest, Willow Valley Living

Albert Kuhner, Kuhner Associates Funeral Directors, Inc.

Anthony Legenstein, Certified Carpet

Alyssa Moyer, MD, WellSpan Health

Michael Ripchinski, MD, Penn Medicine/Lancaster General Health

Charles H. Simms, Jr., PNC Bank

David Swartley, Moravian Manor, Inc.

Carrie E. Willetts, WellSpan Ephrata Community Hospital

### HOSPICE & COMMUNITY CARE LEADERSHIP

Steve Knaub, President & Chief Executive Officer

Ann Marie Ackerman, Vice President, Patient Care

Andrea Aldinger, Vice President, Medical Services & Business Development

Krista Kae Hazen, Senior Vice President, Chief Financial Officer

Bonnie Jess Lopane, Vice President, Chief Development Officer

Brent Keener, Vice President, Human Resources

Michael Link, Vice President, Chief Information Officer

## YOUR CARE

### THE CEDRIC E. GROSNICK SCHOLARSHIP ENDOWMENT FUND

As in any profession, continuous learning for employees is key to keeping abreast of new trends and skills to deliver quality service. And Hospice & Community Care employees are no different.

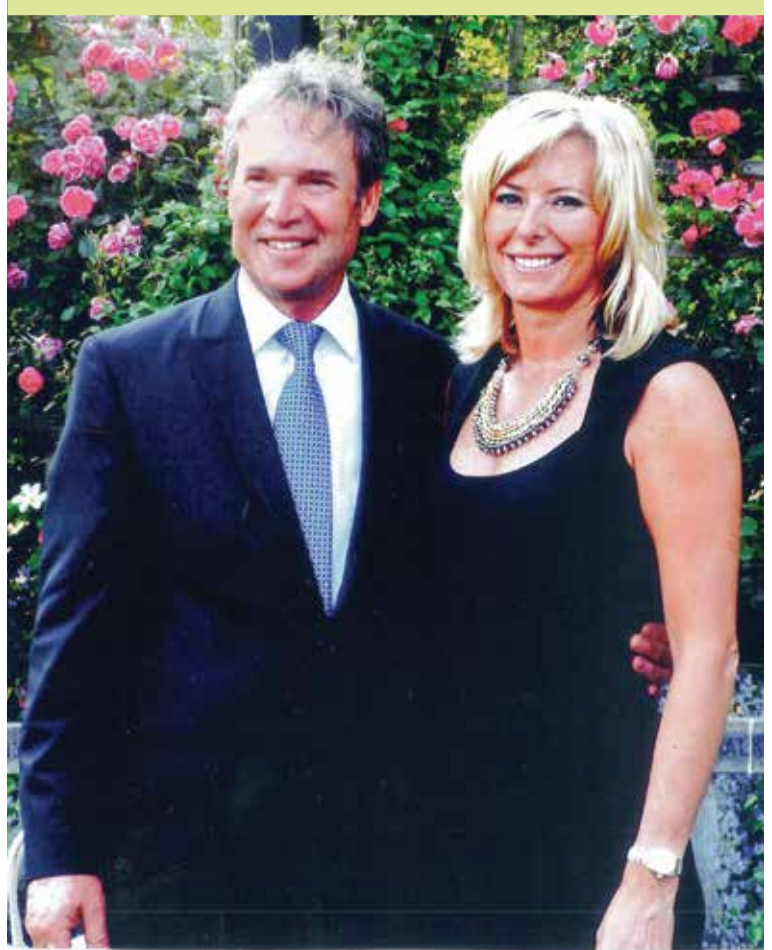
**A**ndrea "Andee" Grosnick generously created The Cedric E. Grosnick Scholarship Endowment Fund in honor of her late husband, Dr. Cedric "Ced" Grosnick, who was cared for by Hospice & Community Care. The Fund is designed to enhance excellence in Hospice and Palliative Care by providing educational opportunities for Hospice & Community Care's clinical staff.

Ced, a periodontist, valued education deeply and continually furthered his education so when Andee and her family were given the option to create an education fund it was perfect.

Scholarship funds are used to support staff participation in clinical educational opportunities including conferences, certifications and webinars, and are offered on an annual basis.

"The standard of care offered by Hospice & Community Care is a step above everyone else and they made a bad situation as easy as it could have been," commented Andee. "I could not imagine losing my husband without the support that Hospice & Community Care provided for us. This Fund is my way to give back."

For more information about or to make a gift to The Cedric E. Grosnick Scholarship Endowment Fund, visit [www.HospiceCommunity.org](http://www.HospiceCommunity.org) or contact Bonnie Jess Lopane, Vice President, Chief Development Officer, at (717) 391-2407.



*Ced and Andee Grosnick*



**To read about Andee and Ced's Hospice story, visit [www.HospiceCommunity.org/ImpactReport](http://www.HospiceCommunity.org/ImpactReport)**

# 15

Total number of staff who have benefited from the Fund since its establishment in 2016

# \$13,161

Awarded in scholarships to staff members 2016–2019

## MEETING THE FUTURE NEEDS OF PATIENTS AND FAMILIES

In 2019, Deb Gonzalez, MSW, CT, Bilingual Bereavement Counselor, Pathways Center for Grief & Loss, attended the Association for Death Education and Counseling's (ADEC) 14th Annual Conference in Atlanta. Thanks to The Cedric E. Grosnick Scholarship Endowment Fund, she was able to not only grow her knowledge about bereavement support, but serve as a resource for others in the profession.

What Deb learned at the conference was invaluable, and she is applying each lesson learned back into helping patients and families. "I learned how to be observant with grieving individuals and families; how to approach each situation to best meet them where they are on their grief journey; and how to help reframe their experiences so they can see their progress," commented Deb. "I also had the opportunity to meet with other Latino professionals and share stories related to our bereavement practices."

Deb participated in many educational sessions throughout the week that broadened her perspective and knowledge about grief. She attended sessions about attachment theories and their impacts on grief, as well as how others grieve culturally. "It was very impactful to see ADEC's openness to different cultures," commented Deb. Because of Deb's role at the Pathways Center, she is often seen as the expert when it comes to cultural-related grief and the discussion had at the conference allowed her to bring as she put it, "cultural humility to my practice."

In addition to attending, Deb and Patti Anewalt, Director of the Pathways Center for Grief & Loss, served as conference presenters. "Being able to serve as a presenter was an amazing experience," commented Deb. "Patti and I had a chance to discuss compassion fatigue from the perspective of self-care, and how bereavement counselors need to be present in their own journey when providing support to others who are grieving."

"Education is a valuable cornerstone in my profession," shared Deb. "Without The Cedric E. Grosnick Scholarship Endowment Fund, I would not have had this opportunity. I'm grateful for the chance to broaden my knowledge and experiences."



*Deb Gonzalez*

# YOUR COMMUNITY

## SUPPORT AFTER A UNIQUE LOSS

Over the last several years, Hospice & Community Care's Pathways Center for Grief & Loss has seen a significant uptick in the number of children, teens and adults supported who have lost a loved one due to overdose, addiction, suicide or other tragedy. Pathways Center counselors find that it can take people grieving a sudden, unexpected death, longer to grieve and mourn than it will for someone grieving a loss that is somewhat expected.

With this in mind, the Pathways Center offers a regularly scheduled support group that is specifically designed to help people coping with a sudden loss. This Sudden Loss group provides a safe environment for adults to share with others who also have questions and struggle with the shock and intense reactions associated with sudden traumatic losses.

Now in this third year, GRASP (Grief Recovery After a Substance Passing) is a support group for adults who have lost a loved one as a result of substance abuse or addiction. Loss due to overdose or addiction often comes with a negative stigma and leaves families struggling with guilt and anger as to how to handle their loss. GRASP is a group that allows people to speak openly and candidly about their grief journey

and is led by individuals who have also lost loved ones due to addiction. *Watch for more services and resources in 2020 for individuals who have lost a loved one due to overdose or addiction.*

Grief is experienced by the entire family – children, teens and adults. Amid serious illness and death, children and teens often are overlooked, yet their needs are significant. The Pathways Center offers Coping Kids & Teens, a six-week series for children and teens to meet in peer support groups and participate in activities to help them cope with a death, while adults learn how to manage the challenges of supporting grieving teens and children. In 2019, more than half of the children and teens served through Coping Kids & Teens lost a loved one unexpectedly.

8,971

Total number of children, teens and families served by the Pathways Center for Grief & Loss

1,171

Total number of bereaved individuals supported by the Pathways Center for Grief & Loss who were not served by Hospice & Community Care

42

Total number of children and teens who experienced an overdose loss, suicide loss, or loss due to a death from a homicide or accident

## A COMFORTING PLACE TO START YOUR GRIEF JOURNEY

Over the years thousands of people have come to the Pathways Center because of the death of a loved one. Fortunately, far fewer ever return at a later date because they experience a second, equally significant loved one's death. But Dominique Miller is one of those people. In 2008 she lost her husband at the age of 42 to suicide, leaving her with four children ranging in age from seven to 18 to raise on her own. Seven years later Dominique once again sought support from the Pathways Center when her oldest daughter, Jen, also died from suicide at the age of 23.

After her husband Bill died, Dominique and her youngest son attended the Coping Kids & Teens family support series every Thursday evening. "I lived for Thursday nights. It was a happy part of my week," she explained. She described it as a "safe place to hear others' stories, realize that I'm not going crazy, and I'm not alone."

That first year after her husband died she talked about feeling "very fragile." She could not work, and she attended counseling sessions regularly to help her process all of her emotions. She was very selective about who she could feel safe with and talk openly to and was gentle with herself.

Unfortunately, everything she learned helped prepare her for what she would go through after her daughter died a few years

later. Once again she turned to the Pathways Center where she went to several Loss of Child support group sessions. She also attended the Suicide Loss six-week series which she described as "incredible – I loved it!" There she learned about mental illness and how complicated the grief is after a suicide loss. Not that she didn't already know that, but she felt validated by all that she learned from the series.

After losing her husband, Dominique eventually went back to school and obtained a Master's Degree in Social Work. She now works for the Veterans Administration, helping others with their mental illness. She also took the Hospice volunteer training and now co-facilitates some of the Pathways Center support groups. She views this as a way to give back and be there for others.



*Dominique Miller*

"The community needs the Pathways Center," shared Dominique. "It is important that donors and the community help keep the Center funded. It impacts so many people, not just those whose loved one was in Hospice care, and it's an invaluable resource."



To watch Dominique's story, visit [www.HospiceCommunity.org/ImpactReport](http://www.HospiceCommunity.org/ImpactReport)

# YOUR HOSPICE

## CLINICAL PATIENT SPECIAL NEEDS FUND

“Everyone deserves the same medical care, regardless of financial means or capabilities. They deserve dignity,” Martha Shreiner says seriously as she describes the basis for the Clinical Patient Special Needs Fund at Hospice & Community Care. Martha was the idea behind this fund, and her passion shines through as she talks about it and what it can do, and has done, for Hospice patients and families.

Created in 2015, the Clinical Patient Special Needs Fund is available to help cover specialized services, equipment and supplies for patients, in addition to helping to provide for family needs that may arise due to the patient’s illness. This Fund helps to provide for things that are not reimbursable by Medicare or insurance, and are possible only through the support of the community.

“As a volunteer I supported patients and families – meeting so many fascinating people and becoming a friend. Dignity truly became real to me, and everyone needs dignity at end of life,” Martha says. “Serious illness impacts the entire family, especially financially, and no one should have to choose between their medications and groceries. This Fund eliminates that choice and restores dignity.”



*Martha Shreiner*

The Fund covers things such as professional interpretation services to facilitate communication with patients, gift cards for groceries and medications unrelated to a patient’s diagnosis, and special equipment to meet the unique needs of our youngest patients.

For more information or to make a gift to the Clinical Patient Special Needs Fund, visit [www.HospiceCommunity.org](http://www.HospiceCommunity.org) or call Amy Lewis, Director of Philanthropy, at (717) 735-8729.



**To learn how we have helped honor the wishes of a patient using contributions from the Clinical Patient Special Needs Fund, visit [www.HospiceCommunity.org/ImpactReport](http://www.HospiceCommunity.org/ImpactReport)**

# \$44,945

Total dollars used from the Fund in 2019



## PROVIDING CARE FOR ALL

**“It isn’t natural for a child to be in Hospice care,” shared Pam Acey, RN, Hospice & Community Care. “As parents you never want to think about end-of-life choices for your little ones, but it happens. And it’s difficult and emotional. The Clinical Patient Special Needs Fund is just one of the many ways that Hospice & Community Care lightens the financial burdens for families so that they can spend precious moments with their loved ones.”**

Infants, children and teenagers who are receiving Hospice care often need specially-sized equipment which is generally quite costly. Parents often must quit their job to care for their child and they may lose their insurance; if they continue to work the demands are exhausting. Financial demands increase because of additional expensive medical needs, including travel for care at specialized hospitals out of town, and loss of insurance. While these families are often on Medicaid, this still does not cover all of the needs that they have due to their child’s illness.

“Hospice was recently caring for an older child with a rare genetic disease who needed specialized equipment for his care,” commented Pam. “Medical equipment expenses included a ventilator, coughlator and feeding pump, and this equipment was provided by a specialized vendor outside of normal reimbursement. In addition, the patient’s primary caregiver, his mother, was a nurse and had to work evenings to help cover the cost. Thanks to gifts made by the community to the Clinical Patient Special Needs Fund, we were able to provide the family with gift cards for groceries and pay for the equipment.”

Pam has also used the Clinical Patient Special Needs Fund to assist with the cost of specialized skin

dressings for a young patient, as well as to pay for baby formula and a needed baby scale.

“The Clinical Patient Special Needs Fund is helping to meet some very specific, unique needs that are experienced by Hospice patients and families,” commented Pam. “The Fund helps to provide support to not only the patient but to the caregivers. This is so important, because pediatric illnesses can vary, sometimes extending long periods, making caregiver support critical.”

At end of life, patients want to spend meaningful moments with family and friends, not worry about their illness. The Clinical Patient Special Needs Fund provides personalized care and support to help patients and families make the most of their time together. “Thank you to the community for helping families focus on creating lasting memories,” shared Pam. “I am so grateful to have this resource to offer to patients and families.”



# YOUR HOSPICE

## DEMENTIA RESOURCE KITS

Hospice & Community Care provides specialized dementia care for patients and families with loved ones in various stages of the disease. Quality of life is the foundation of the hospice philosophy and studies show that patients with dementia, as well as their families, can benefit greatly from the care and support provided by Palliative Care and Hospice Care.

To help alleviate restlessness for patients with dementia, as well as wandering and combativeness related to their illness, Hospice & Community Care created Dementia Resource Kits. These uniquely specialized kits were funded through the Women's Giving Circle, a group of women who invest yearly in programs and services that build and strengthen hospice-related programs through the power of joint contributions. The kits are customizable based on the specific interests and capabilities of patients and may include: magazines, picture books and short stories encouraging reminiscing; dolls and mechanical cats and dogs bringing comfort and companionship; and fidget blankets offering sensory therapy for agitated patients.

The kits have served as a way of enhancing staff, volunteer and caregiver interactions by bringing them closer to patients and allowing them to provide an additional layer of comfort. This concept also generated the creation of a volunteer training for 40 Hospice volunteers to learn how to use these materials when working with patients.

Hospice staff and volunteers have found that patients are smiling and laughing more, and are more apt to interact with family members and friends after using items from the kit.

For more information about the Dementia Resource Kits, call Amy Lewis, Director of Philanthropy, at (717) 735-8729. To join the Women's Giving Circle, visit [www.hospicecommunity.org](http://www.hospicecommunity.org) or call (717) 295-3900.

## THE WOMENS GIVING CIRCLE'S 2019 IMPACT



155

Women's Giving Circle members contributed \$77,500 in 2019

14

Projects were funded by the Women's Giving Circle in 2019

75

An estimated number of patients who used items from the Dementia Resource kit in 2019



To watch how we have helped patients benefit from the Dementia Resource Kits, visit [www.HospiceCommunity.org/ImpactReport](http://www.HospiceCommunity.org/ImpactReport)

## BRINGING FAMILIES TOGETHER

Kelly Trach has been a member of Hospice & Community Care's Women's Giving Circle since 2011. As a member, she has been instrumental in funding new and innovative projects and services to enhance Hospice's care and comfort for patients and families. And one of those funded services, unbeknownst by Kelly, would hit close to home.

The Women's Giving Circle provides interested women with the unique opportunity to pool their individual annual contribution of \$500 and have a greater impact by investing in programs and services that build and strengthen hospice-related programs through the power of joint contributions.

Kelly isn't just a supporter of the Dementia Resource Kits through her involvement in the Women's Giving Circle, she also experienced the benefits of the Kit firsthand when her mother, Dolores, used one of Hospice & Community Care's mechanical companion cats in 2019 at the age of 95. The mechanical cats are one of many items in the Dementia Resource Kits.

Kelly was given the companion cat at a Women's Giving Circle event. "The funny thing, my mom didn't like cats; we grew up with dogs," shared Kelly. "That's why I was surprised with how much she liked the cat. Many times she really thought it was real."

The cat, as her mother named her, Snowflakes, was the perfect solution to help ease her mom's symptoms. "Snowflakes helped to calm Mom down and distracted her from her frustrations and pain," shared Kelly.



*Dolores with Snowflakes*

"As Mom's dementia progressed, we couldn't carry on normal conversations," shared Kelly, "so Snowflakes provided a distraction and something we could talk about. When talking to or about the cat, she made perfect sense." Often Kelly would bring her mom to her home for an afternoon visit, however, when they would drive back to her home, a local senior living facility, she would become frustrated, agitated and mad at Kelly for not letting her stay at the home where she lived with them for 15 years. "After I was given the mechanical cat from Hospice, I would give Mom Snowflakes to hold on her lap during the trip back to the nursing home," commented Kelly. "It made the drive much more enjoyable."

"The symptoms of Dementia and Alzheimer's are so difficult to understand and to know how to deal with for families and caregivers... let alone the person experiencing the changes," commented Kelly, "so anything that can help all of those involved is very, very important."

## YOUR DOLLARS AT WORK

Community support has served as the foundation for Hospice & Community Care, and continues to be a driving force for the organization's sustainability and growth over the past 40 years. Thanks to the generosity of the community—whether financially, through donated items or serving as a volunteer – Hospice & Community has been able to ensure that each and every patient receives personalized care and comfort when they need it most.

**A**s one of the few non-profit hospices serving south Central Pennsylvania, Hospice & Community Care relies heavily on the generous support of the community. And it is because of that support that Hospice is able to ensure that all

patients and families, regardless of financial resources, are never denied care and comfort.

The Medicare Hospice Benefit pays for a portion of hospice and end-of-life care provided by a hospice program. Private health insurance may also

provide coverage for people facing end of life. However, when specialized equipment or medications are not reimbursed by Medicare or insurance, the generous support that Hospice & Community Care receives from the community helps to offset costs.

### HERE ARE SOME OF THE WAYS THAT YOUR DOLLARS MADE A MEANINGFUL DIFFERENCE IN 2019:

- Uninsured patients and families could spend quality time together without worrying about how they would cover the cost of Hospice care, thanks to the **\$179,812** raised through the Day of Care program.
- **Several Veteran patients** received a military pinning by Hospice volunteers, which included providing the patients with a military certificate with their name and branch of the military, a small flag, a star and a Veteran service pin, made possible through the Women's Giving Circle.
- Due to gifts made to the **Clinical Patient Special Needs Fund**, Hospice & Community Care staff were able to transport a patient, whose insurance would not cover the ambulance transfer, from the Bob Fryer & Family Inpatient Center to her home so that she could spend Easter with her family.
- Patients, on a limited budget and with food restrictions, were provided with **grocery store gift cards** through funds made available by the generous support of the community.
- Gifts made to **The Nancy M. & H. Carter Clements Dementia Care Endowment Fund** supported care and services for patients and their families who were coping with dementia, including those unable to pay for that care.
- Children and teens received grief support at no cost at the Pathways Center for Grief & Loss, thanks to **\$90,706** raised during Hospice & Community Care's **Spring Fling** fundraiser.
- Gifts made to the **Inpatient Center Extended Stay Fund** provided patients and their families valuable time to focus on what was most important to them. When insurance no longer covers inpatient room and board, and patients and families were unable to pay the **\$325 per day** cost, the Fund helped to cover these fees.

## SUMMARY FINANCIAL REPORT

JANUARY 1, 2019 - DECEMBER 31, 2019

PROGRAM SERVICE REVENUE		\$ 33,649,314
EXPENSES:		
Patient Services	\$ 32,726,854	
Other Operating Expenses	3,923,052	
*Volunteer Service	<u>609,612</u>	<u>37,259,518</u>
Program Service Expense over Revenue		(3,610,204)
NON-PROGRAM SERVICE REVENUE:		
Public Support	2,435,135	
Special Events (Net)	1,083,625	
Net Investment Income	4,800,001	
Grants & Other	24,869	
*Volunteer Service	<u>609,612</u>	<u>8,953,242</u>
Excess of Revenue over Expenses		5,343,038
Net Assets - January 1, 2019		<u>47,661,869</u>
Net Assets - December 31, 2019		<u>\$ 53,004,907</u>

\* Figure stated represents value of donated services. It is not a cash revenue or expense.

Community support is vital for Hospice & Community Care to provide quality end-of-life care and to cover costs that are not reimbursed through Medicare or insurance. Hospice & Community Care is grateful for the many ways the community provides support through contributions, gifts of securities, provisions in estate plans and through volunteering. These gifts allow us to provide care and compassion for patients, families and caregivers coping with serious illness and bereavement support for all ages.

## YOUR TIME AND TALENT

Support is also more than monetary. Hospice & Community Care is fortunate to have more than 1,100 volunteers who support patients, families and staff every day. These men and women give freely of their time and talents to help provide care and comfort to patients and families.

**37,040**

Total number of volunteer hours in 2019

**203,100**

Total number of miles driven in 2019

**450**

More than **450** volunteers helped make the Labor Day Auction a success in 2019

## IMPACT BY THE NUMBERS

**15,856**

Total number of unique individuals supported by Hospice & Community Care

**407**

Total number of Hospice & Community Care employees

**6,885**

Total number of patients who received Hospice, Palliative and Supportive Care

**79**

New staff hired

**8,971**

Total number of people who received support through the Pathways Center for Grief & Loss

**41**

Total number of senior living facilities we partner with in Lancaster and York counties

**117,511**

Total number of visits to patients made by Hospice nurses, social workers, aides, chaplains, music and massage therapists

**460**

Visiting professionals trained

**1,092**

Total number of patients cared for in the Bob Fryer & Family Inpatient Center

**1,202,410**

Miles driven by staff to provide our care



## LABOR DAY AUCTION

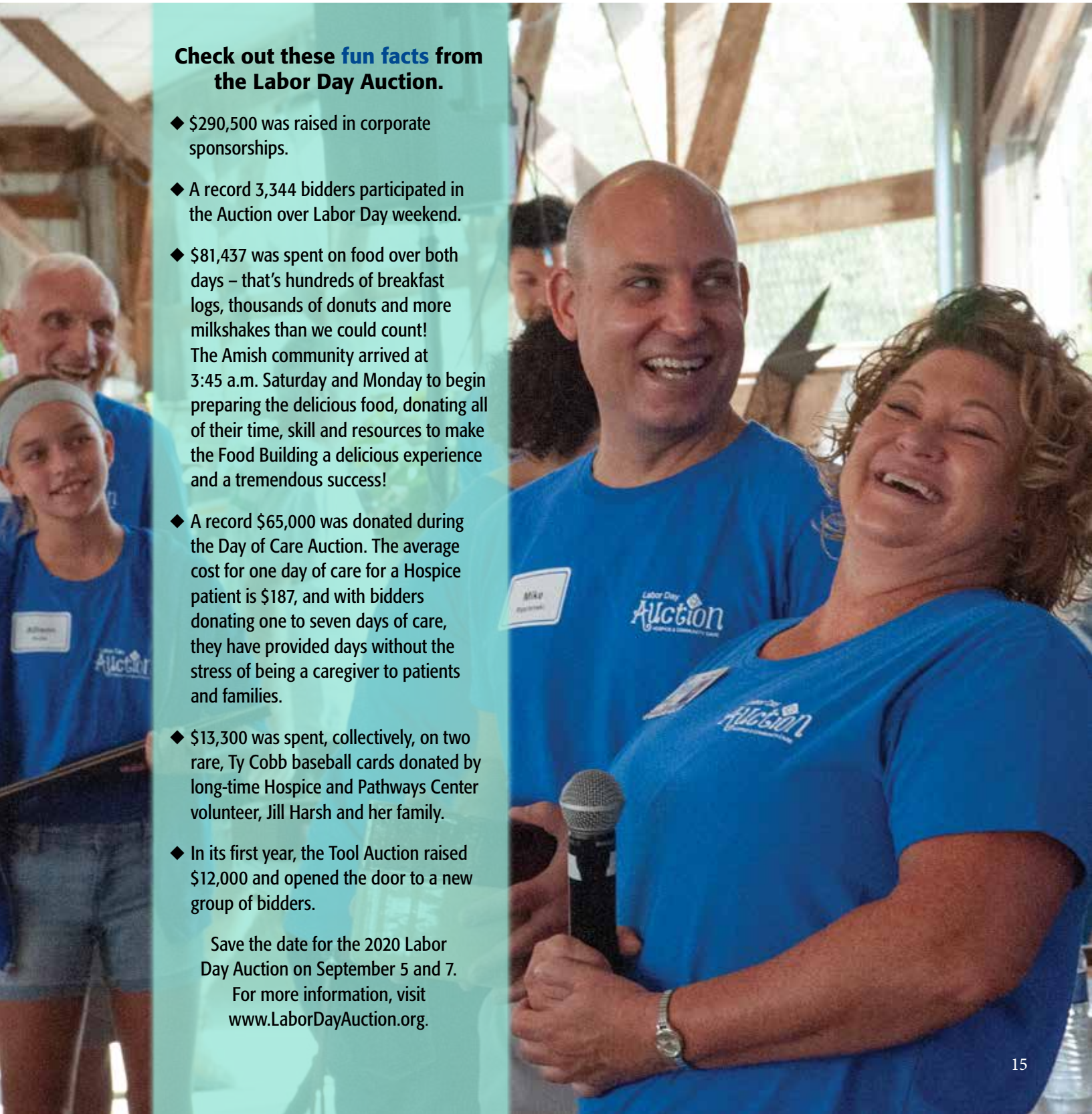
Thanks to the community the 2019 Labor Day Auction raised over \$870,000. These funds were reinvested back into care and support for patients and families receiving Hospice, Palliative and Supportive Care and grief support through the Pathways Center for Grief & Loss.

### Check out these fun facts from the Labor Day Auction.

- ◆ \$290,500 was raised in corporate sponsorships.
- ◆ A record 3,344 bidders participated in the Auction over Labor Day weekend.
- ◆ \$81,437 was spent on food over both days – that’s hundreds of breakfast logs, thousands of donuts and more milkshakes than we could count! The Amish community arrived at 3:45 a.m. Saturday and Monday to begin preparing the delicious food, donating all of their time, skill and resources to make the Food Building a delicious experience and a tremendous success!
- ◆ A record \$65,000 was donated during the Day of Care Auction. The average cost for one day of care for a Hospice patient is \$187, and with bidders donating one to seven days of care, they have provided days without the stress of being a caregiver to patients and families.
- ◆ \$13,300 was spent, collectively, on two rare, Ty Cobb baseball cards donated by long-time Hospice and Pathways Center volunteer, Jill Harsh and her family.
- ◆ In its first year, the Tool Auction raised \$12,000 and opened the door to a new group of bidders.

Save the date for the 2020 Labor Day Auction on September 5 and 7.

For more information, visit [www.LaborDayAuction.org](http://www.LaborDayAuction.org).



# In Grateful Recognition

The generosity of our donors allows us to carry out our mission of “providing personalized care and comfort to help patients and families live better with serious illness through end of life.”

## 2019 Evergreen Circle of Friends

*The Evergreen Circle of Friends is a special tribute to those who indicate in writing that their estate plan includes provisions to help support Hospice & Community Care, helping to preserve and enhance hospice and end-of-life care for years to come.*

Ann Marie Ackerman  
Joy and Bob\* Allen  
Anonymous  
A. Richard and Ellie Bard  
Ann B. Barshinger  
Bill and Laralee Bash  
Mr. and Mrs. Gary Bellanca  
Dick and Barbara\* Blakinger  
Barbara O. Breneman  
Rebecca A. Brown  
Thomas S. Buter  
Susan C. Clements  
Larry and Sarah Conte  
Dick and Loris Cunningham  
Lanie and Jeff Dean  
Gloria and Terry Degler  
Phillip and Sandy Eby  
John\* and Deborah D. Ehleiter  
Rosemarie Engler  
Martha A. Eppley  
Margaret S. Fisher  
Thelma G. and Robert M. Flory\*  
Fred C. Geiger Jr.  
John T. Gerlach Jr.  
Rose E. Gibble  
George and Mary Graner  
Dr. and Mrs. Robert E. Graybill  
Jamie A. Guffey  
Thomas and Pamela Hall  
Jolene A. Hendrix  
Kenneth W. Hershey  
Wendy S. Johnson and  
Kenneth Johnson  
Mary Ellen and Bill Kopetz  
Shelly S. Laity  
Carol and Joe Liebl  
Diane K. Lindholm  
Bonnie Jess Lopane and  
Stephen J. Lopane\*  
Anna R. Manson  
Cindy S. Mellinger  
Marlise W. Mellinger  
Mr. and Mrs. Thomas E. Morell  
Lois T. Morgan  
Ella Mae Mosebach  
Margaret J. Neff  
Barbara Obetz

Robert E. Patterson  
Beverly V. Piscitelli  
Joan Riale  
Henry\* and Clara Harriet  
Rosenbaum  
Gilbert and Esther K.B. Sager  
Bernard Savransky  
Gregg and Terri Scott  
Rev. Martha B. Sheaffer  
Martha E. Shreiner  
Connie Simmons  
Jo Ann Snavely-Barton  
Gwendolyn T. Snyder  
Evelyn F. Sweigart  
Dorothy IlventoTheros  
Suzanne Weinhold  
Michaelene D. Willy  
Chap. Paul\* and  
Mrs. Susan B. Xander

## 2019 Women's Giving Circle

*The Women's Giving Circle provides interested women with the unique opportunity to pool their funds and effectively invest in Hospice & Community Care projects that will build and strengthen hospice-related programs through the power of joint contributions.*

Susan Adams  
Blakelyn D. Albright  
Joy Allen  
Robyn J. Alspach  
Rita Amin  
Anonymous  
Julia M. Arnold  
Michelle F. Atwater  
Sandra M. Baker  
Barbara R. Barnes  
Mary Barry  
Ann B. Barshinger  
Laralee B. Bash  
Diane L. Bender  
Laura A. Bender  
Bethany A. Benedict  
Marilyn R. Berger  
Sue Binkle  
Heike Bloom  
Joyce M. Bomberger  
Susan Bonekemper  
Kathryn Bounds  
Lee J. Brown  
Mary W. Burkhardt\*  
Jennifer W. Burkhardt  
Frances H. Carr  
Jill M. Carson  
Patricia B. Clemens

Meredith Jorgensen Cooke  
Katherine M. Dauber  
Gloria E. Degler  
Nancy L. Diem  
Jeanne W. Dinkins  
Susan Dyson Harkleroad  
Jane N. Eastman  
Meridith R. Eckroat  
Deborah Ehleiter  
Martha A. Eppley  
Kristine Eveler  
Mary Suzanne Farmer  
Priscilla K. Farmer  
Jodi Feyock  
Margaret S. Fisher  
Sarah Young Fisher  
Ruth Anne Foore  
Sandra L. Frey  
Esther Furman  
Karen Laino Giannuzzi  
Rose E. Gibble  
Priscilla Glasow  
Monika F. Glenn  
Kim Gohn  
Leslie Gorbey  
Mary E. Graner  
Sandra E. Gray, Esq.  
Jennifer E. C. Greenberg  
Lisa Groff  
Janice C. Groft  
Carol B. Hartley  
Christina L. Hausner, Esq.  
Dr. Jeanette L. Hebel  
Susan Heinle  
Betty E. Henny  
Rebecca L. Herr  
Christine Hogan  
Lucinda K. Hogentogler  
Joyce A. Hoover  
Laura K. Howell  
Nancy Mayer Hughes, Esq.  
Patricia Hunt  
Susan Weitzel-Joines  
Jill M. Kelley  
Carolyn O. Kendall  
Denise M. Kenna  
Karen M. Kenna  
Barbara A. Kesselring  
Timothea M. Kirchner  
Betty J. Kreider  
Marie E. LeFever  
Katherine E. Leser  
Diane K. Lindholm  
Kelly M. Lynch  
Brenda McCleaf  
Carolyn H. McGuigan  
Cindy S. Mellinger

Marlise W. Mellinger  
Sharon Milheizler  
Norma Millard  
Joan N. Miller  
Judith A. Millhouse  
Pamela Minardi  
Gail D. Monteleone  
Joy L. Montgomery  
Maureen Morell  
Lois T. Morgan  
Karen T. Morrison  
Rhonda Murphy  
Diane L. Murry  
Debra R. Musso  
Margaret J. Neff  
Pamela R. Lyons-Neville  
Dr. Kristina B. Newport  
Barbara Obetz  
Lorraine J. Oetting  
Anne Osborn  
Lisa M. Palmquist  
Carol A. Papsen  
Charlotte C. Parsons  
Joan K. Paxton  
Valerie J. Peifer  
Sandra M. Percy  
Beverly V. Piscitelli  
Karen Redner  
Lin Rengier  
Cynthia E. Resch  
Leslie F. Rice  
Ginjr Humphreys Robinson  
Patricia A. Rohrer  
Georgina T. Russo  
Joan Samitt  
Margaret M. Sanders  
Anna Rose Schannauer  
Linda A. Schroeder  
Terri Scott  
Marcia Sensenig  
Susanne Shand  
Ethel B. Shank  
Jane A. Shipe  
Martha E. Shreiner  
Patrice Smedley  
Gwendolyn T. Snyder  
Luci Steele  
Joan S. Stemen  
Eleanor Strayer  
Kelly L. Sumpter  
Adele B. Terwilliger  
Carol M. Thompson  
Kelly V. Trach  
Harla Verman  
Noreen F. Walls  
Yvonne P. Weaver  
Ann A. Webber

Yvette D. Weber  
Katherine H. West  
Carrie E. Willets  
Michaelene D. Willy  
Margaret A. Woodcock  
Susan L. Young  
Judy D. Zartman

## Estate Gifts

*Hospice & Community Care would like to recognize those individuals who so generously named Hospice & Community Care as a beneficiary in their estate. Gifts were received from the following individuals' estates during 2019.*

Anonymous  
Aaron R. Bowman  
Helen B. Brubaker  
Mary W. Burkhardt  
William J. Chambers  
Ruth G. Collins  
Aleta M. Faust  
Harold J. Frey, Sr.  
Katherine K. Gaeth  
Betty G. Glick  
Jane M. Goodell  
Florence M. Hammel  
Gilbert S. Kauffman Jr.  
Dorothy S. Cramer Decker  
Kirchner  
Edward Z. Martin  
Emma N. Martin  
Margaret Miller  
Toinette Mitchell  
Marian A. Nolt  
Michael Nunziata  
Janice L. Reed  
Shirley A. Roeser  
George W. Slaymaker  
Malinda F. Smoker  
Roland K. Snader  
Naomi Z. Stoltzfus  
Stanley J. Szalak  
Rebecca S. Tammany  
Annie B. Zook

## 2019 Spring Fling Committee

Cheryl Fuss  
Sue Garrett  
Becky Noll  
Sharon Tschudy

## 2019 Wine, Dine & Unwind Committee

Sandy Baker  
Barbara Barnes  
Lisa Barshinger  
Cindy Hogentogler



Bernice Quesenberry  
Yvette Weber  
Connie Whitacre  
Connie Wolfe

### Hospice Partners

*Hospice Partners recognizes those who have contributed \$60.00 or more to Hospice & Community Care in 2019*

### Visionary Partners \$25,000 +

Mrs. Joy Allen  
Anonymous  
Ann B. Barshinger  
Memorial Health Fund  
Diane Murry  
E.E. Murry Family Foundation  
Thomas A. & Georgina T. Russo  
Family Foundation  
Mr. Bernard Savransky  
The Donald B. and Dorothy L.  
Stabler Foundation  
Turkey Hill Dairy  
Viocity Group  
J. William Warehime Foundation  
WGAL 8  
Mrs. Andrea E. Wilson

### Founding Partners \$10,000 - \$24,999

Anonymous  
Todd Auker Construction Inc.  
Benchmark Construction  
Company, Inc.  
Blue Ridge Communications  
Anne and Steve BurrIDGE  
Cumulus Media  
Ms. Susan C. Clements  
Engle Printing &  
Publishing Co., Inc.  
Family Owned Markets  
Sarah Young Fisher  
Mr. Robert L. Fryer Jr.  
The Gilded Lily  
The Arthur J. and Lee R.  
Glatfelter Foundation  
Groff Family Funeral &  
Cremation Services  
Norman and Judith Henry  
Jan's Circle of Friends  
Kuhner Associates Funeral  
Directors Inc.  
Lancaster County Community  
Foundation  
Lancaster Toyota  
Ms. Margaret J. Neff  
Penn Medicine/Lancaster  
General Health  
Powder Mill Foundation  
Rodgers & Associates  
Ms. Lori L. Shelly  
Charles F. Snyder Funeral Homes  
& Crematory  
Mrs. Dorothy Ilvento Theros  
The Wunderkinder Foundation

### 1980 Partners \$5,000 - \$9,999

Anonymous  
Heike and Fred Bloom  
Mr. and Mrs. Terry Burke  
EHD  
Mr. Michael J. Esch  
Denis and Patricia Foley  
Anne D. Gardner  
Mrs. Rose E. Gibble  
Mr. Paul R. Girvin  
Glatfelter Insurance Group  
Gooding Group Foundation  
Mr. and Mrs. Robert F. Groff, Jr.  
Harley Davidson Motor Company  
Chip and LuAnn Hassler  
Michael and Coletta Herrman  
Hondru Auto Group  
Mr. Charles S. Kopp Jr.  
Lancaster Senior Golf Association  
Pamela R. Lyons-Neville  
Sean Michael  
National Hospice & Palliative Care  
Organization, Inc.  
Lorraine J. Oetting  
Parkhill Jewelry  
Mrs. Patricia A. Pfennig  
Ms. Jennifer D. Rea  
RKL  
Mr. Jack Robinson  
Susan L. Rohrer  
Mr. and Mrs. Christopher A. Stump  
Ms. Noreen F. Walls  
WellSpan Health

### Leadership Partners \$2,500 - \$4,999

The Abel Family Legacy Trust  
William and Susan Adams  
Andrea and Travis Aldinger  
Anonymous  
Bailey Coach  
Barley Snyder  
Mrs. Mary D. Barry  
Dick Blakinger  
Blakinger Thomas Law Firm  
Susan L. Bonekemper  
Buck Company, LLC  
Burle Business Park  
Mr. Thomas S. Buter  
Citizens Bank  
The Comprehensive Companies  
Cyrus R. Peters Memorial VFW  
Post #5956  
DeBord Snyder Funeral Home &  
Crematory  
Eastern Alliance Insurance Group  
Mrs. Jane N. Eastman  
Fulton Bank  
Goodhart Sons, Inc.  
Goodville Mutual Casualty  
Company  
Mr. Douglas A. Henry  
Henry's Seafood

Rick and Cindy Hogentogler  
Russell & Eleanor Horn Foundation  
Bonnie Jess Lopane  
Kegel's Produce  
Kitchen Kettle Village  
Steve and Cindy Knaub  
Kunzler & Company, Inc.  
P. Alan and Linda K. Loss  
Kelly and Paul Lynch  
Mrs. Charlotte M. Martin  
E. K. Martin & Sons, Inc.  
Ed and Michelle Monborne  
Mr. and Mrs. Thomas E. Morell  
Mrs. Lois T. Morgan  
Karen and George Morrison  
Murray Insurance Associates, Inc.  
Performance Roofing  
Associates, Inc.  
Phoenix Courier Ltd.  
Gilbert and Esther K.B. Sager  
Saxton & Stump  
Mrs. Anna Rose Schannauer  
Mr. Robert L. Schroeder  
Mrs. Martha E. Shreiner  
Ms. Gwendolyn T. Snyder  
Michael and Donna Spangler  
The Standard Group  
Mary J. Strubel  
Mr. and Mrs. Michael Tims  
Travel Leaders  
TriStarr  
Mr. Ronald Tschudy  
Visiting Angels  
Susan E. Wallace  
Yvette and Paul Weber

### Community Partners \$1,000 - \$2,499

Adorers of the Blood of Christ  
Advanced Signs and Graphics  
American Legion Garden Spot  
Post 56  
Jeffrey Anderson  
Anonymous  
Archetype Frameless Glass Inc.  
Ashara-Casiphia Lodge No. 551,  
Free & Accepted Masons  
Aurora Films  
Autohaus Lancaster, Inc.  
Mr. Robert C. Bachman  
Sandra and Scott Baker  
Bank of Bird-In-Hand  
Mr. J. Harold Bare  
BCI All-Size Division  
Mrs. Barbara A. Beiler  
Benjamin Roberts Ltd.  
Dr. Don and Mrs. Julie Berkow  
Beth and Marty Berndt  
Bill Beyer and Leslie Gorbey  
April and James Biller  
Bobcat of Lancaster a Division of  
Lift, Inc.  
Joyce M. Bomberger  
Jim and Joy Bounds  
Mr. Frederic J. Bowlan  
Brecknock Builders LLC  
Brethren Village Chapel  
Brooklawn Paving, LLC  
Donna and Bruce Bucher  
Ray and Leslie Bures  
Mike and Carol Burnley  
Janet and Larry Carroll  
The Cat's Meow  
CCS Building Group  
Celebration for Life, Inc.  
Certified Carpet  
Gina and Karl Christianson  
Clark Mechanical Services, Inc.  
DBA: C Mechanical Services  
Clean Enterprises  
Heidi and Marco Colosi  
Conestoga Wood Specialties  
Corporation  
Ms. Alicia Cornelison  
Carlton and Carol Cotnoir  
Ken and Janet Craley  
Dick and Lorin Cunningham  
Ms. Janice E. Custer  
Katherine M. Dauber  
Dewald Funeral &  
Cremation Services  
Mrs. Nancy L. Diem  
William and Karen DiGilio  
Ernie and Donna Doerschuk  
Mrs. Janet F. Dougherty  
Steven and Carla Douple  
Gene and Rosemary Dubowchik  
Mr. William E. Dupree  
East Cocalico Lions Club  
Mrs. Deborah D. Ehleiter  
Karen and Jim Eichelberger  
Eighth Ward Beneficial Association  
Mr. Joel A. Ellis  
Elstonville Sportsmen's Association  
Enck's Custom Catering  
Mr. John M. Enoch  
Ephrata National Bank  
Ever Green Tree & Lawn Care  
Calvin and Diane Ewell  
Mrs. Mary S. Farmer  
Dr. Patrick R. and  
Mary Ann Feehan  
Mary and David Ferruzza  
First American Abstract of PA  
First Capital Federal Credit Union  
William and Linda Forrey  
Andrea and Owen Fox  
Mrs. Sandra L. Frey  
Mrs. Christine H. Furry  
George and Karen Gerdes  
Capt. Karen Laino Giannuzzi,  
USN (Ret.)  
Jacqueline and Richard Gibson  
Col. and Mrs. Jerry Glasow  
Mr. Jay M. Glick  
Reuben and Arianna Glick  
Mrs. Kim Gohn  
Mr. and Mrs. R. Douglas Good

Randy and Joyce Goodhart  
George and Mary Graner  
Mrs. Martha Joan Green  
Dennis and Marta Griest  
Groff-High-Eckenroth  
Funeral Home  
Kent and Elisabeth Habecker  
Mr. Frederic W. Hamor  
Joe and Julie Harriger  
Mr. Don and Dr. Joan Harrold  
Matt and Krista Kae Hazen  
Dr. Jeanette L. Hebel  
Susan and Dennis Heinle  
Ms. Wendy Helm  
Ms. Betty E. Henry  
Ms. Melissa K. Henry  
Henry Schein, Inc.  
Carol and Jim Hergen  
Mr. Brooke W. Herr  
Herr Foods, Inc.  
Jane and Joseph Higdon  
High Companies  
Ed and Lori Hockenberry  
Ms. Christine E. Horst  
Hospice Source  
The JKG Group Morgan Stanley  
Mr. Kevin Johnson  
David L. Johnson  
Mrs. Joan Kachel  
Coleen and Robert Kayden  
Pat and LuAnn Keene  
Clarence and Anna Keener  
Brent and Bonita Keener  
Mrs. Mary Kelly  
Ms. Karen M. Kenna  
Tom and Sharon Kennedy  
Stephen and Veronica Kepchar  
Dennis and Georgia Kerschner  
Keystone Lawn Company  
Mr. Ronald C. Kling  
Mr. Gorman J. Knaub  
Koser Jewelers  
Mrs. Renee Koutroulakis  
Mr. James G. Kreider  
Lapp Electrical Service, Inc.  
Ward and Patricia Latshaw  
John and Peggy Laudenberger  
Mrs. Miriam F. Leaman  
Paula and Robert Lecrone  
Amy Lewis  
Gregory and Carolyn Lewis  
Ms. Diane K. Lindholm  
Michael and Rebecca Link  
Ms. Tirzah S. Loose-Bollinger  
M & T Bank  
Marietta Beneficial Association  
Jay and Janice Martin  
Mr. Robert A. Martin  
Martin's Famous Pastry  
Shoppe, Inc.  
Peter and Elaine McCracken  
Medline Industries, Inc.  
Lynn R. Melhorn

Members 1st Federal Credit Union  
Meridian Products  
Harry and Donna Meyer  
MIND Development & Design, LLC  
Musser's Markets  
Mr. and Mrs. Frank Musso  
National Envelope Imprinting, Inc.  
Natural Awakenings  
Trisha and Todd Nave  
New Holland Home Association  
Mr. Jonas S. Newswanger  
Philip and Pamela Oles  
Orrstown Bank  
Dr. & Mrs. Harshadkumar B. Patel  
Mr. Robert E. Patterson  
Paul Risk Associates, Inc.  
Valerie J. Peifer  
Mrs. Sandra M. Percy  
Mr. Richard D. Poillon Jr.  
Production Express, Inc.  
Pure Water Technology  
Pyfer, Reese, Straub, Gray & Farhat, P.C.  
R & A Magazine  
Red Knob Farm  
Red Lion Lodge B.P.O.E. Elks #1592  
Ms. Karen M. Redner  
Related Company  
Lin Rengier  
Renninger's Golf Carts  
Reynolds Funeral & Cremation, Inc.  
Mr. Levi S. Rhoads Jr.  
Rhoads Energy  
Teresa and Steven Rider  
Mike and Becky Ripchinski  
Risser's Poultry, Inc.  
Riverside Camping Association  
Mrs. Ginjr Humphreys Robinson  
Pat and John Rohrer  
Dr. Charles F. Romberger and Mr. Bill Sklarosky  
Mr. Alan A. Rubin  
George and Barbara Rutter  
Mrs. Maryella E. Sanders  
Mr. Elvin H. Sauder  
Ms. Laura L. Schanz  
Ms. Sharon Schultz  
Scotty's Painting & Paper Hanging, Inc.  
Sechan Electronics, Inc.  
Mrs. Marcia R. Sensenig  
Rev. David and Mrs. Beth Serfass  
Shady Lane Construction  
Shank's Extracts, Inc.  
Dr. Richard and Carole Sherr  
Scott Smith and Beverly Achey  
Sadie and Abner Smucker  
J. C. Snively & Sons, Inc.  
G.R. and Grace M. Sponaugle Charitable Foundation  
Steven and Tanya Stauffer  
Mrs. Mary C. Steiger  
Tom and Angie Stephenson

Mrs. Lydia K. Stoltzfus  
Mr. Thomas L. Stonerook  
Susquehanna Style  
Susquehanna Valley Emergency Medical Services  
Sweet Street Desserts, Inc.  
Mr. Carl A. Swisher  
Pete and Linda Sydorko  
The Station House Tavern & Sports Bar  
Jack and Bobbi Thomas  
Today & Tomorrow Magazine  
Cindy and Dennis Tome  
Kelly and Mark Trach  
Mr. and Mrs. Richard Trout  
Trout Ebersole & Groff LLP  
Trump Tschudy Design LLC  
Univest Financial  
UPMC Lititz  
VFW Post 1463 - Lititz Springs  
Vitamin D  
Mr. Donald H. Weaver  
Mr. and Mrs. Marvin Weaver  
Yvonne Weaver and Family  
Mr. and Mrs. Philip E. Weaver  
Gary and Theresa Welsh  
Philip and Kim Wenger  
Mrs. Dorothy B. Wert  
Whitmoyer Auto Group  
Mrs. Michaelene D. Willy  
Ms. Tammy L. Wilson  
John E. Winters  
Mrs. Dorothy G. Witmer  
Ms. Deborah L. York  
Yorktowne Council #2193  
E. Richard and Susan L. Young  
Dr. and Mrs. Gary Zartman  
Mr. Jere Zell

**Rose Garden Partners  
\$500 - \$999**

Blakelyn and Fred Albright  
Robyn and David Alspach  
American Legion Post 751 Home Association  
Ms. Rita Amin  
Anonymous  
Harold and Christine Arbogast  
Ms. Lisa Arment  
Mike and Becky Armer  
Mrs. Julia M. Arnold  
Atlee Hall LLP  
Rick and Michelle Atwater  
Atwater Malick LLC  
Auntie Anne's, Inc.  
Rick and Susie Bailey  
Gary and Janet Bailey  
Mr. Shaun Balani  
Mrs. Nancy Lou Bare  
Ms. Ruth M. Barker  
Mrs. Nancy L. Barker  
Miss Rebecca Y. Barley  
Mr. Richard L. Barnes  
Bill and Laralee Bash

Mrs. Madeline E. Bauer  
David and Tammy Beamesderfer  
Raymond E. Beck and Sandra M. Walter  
Clair and Mary Anne Becker  
Drew and Kerri Behmer  
Ms. Diane L. Bender  
Mic and Laura Bender  
Ms. Bethany A. Benedict  
Mrs. Marilyn R. Berger  
Joanne and Alan Berkowitz  
Sue and Jim Binkle  
Bortner Bros., Inc.  
Mrs. Patricia A. Bowermaster  
John and Joanne Bowman  
Ms. Barbara O. Breneman  
Matthew Brennan and Kali Thompson  
Ms. Donna Brink  
Ms. Lee J. Brown  
Mr. Barry L. Brown  
Mr. and Mrs. Larry Burkhart  
Dr. and Mrs. Richard C. Burley  
Mrs. Martha M. Bushong  
Mr. John Button  
John and Suzanne Campbell  
Mr. Bruce A. Cantey  
Ronald and Marlene Carpenter  
Rev. Frances and Wayne Carr  
Ms. Jill M. Carson  
Lucinda and William Carter  
Keith and JoAnn Cenekofsky  
Ms. Joanna Chatham  
Barbara and George Clark  
Mr. Bill Clayton  
Mrs. Patricia B. Clemens  
Patricia M. Cochrane  
Mr. Anthony Cohen  
Mr. Raymond C. Consoli  
Thomas and Marie Cook  
Meredith and Chris Cooke  
Gloria and Terry Degler  
Amy and Michael Deptula  
Mr. Frank R. DiFilippo  
Mrs. Jeanne W. Dinkins  
Arthur and Justina Dodge  
Mr. David Dodson  
Mr. John F. Dougherty  
Durex Coverings, Inc.  
Sue and Tim Harkleroad  
East Petersburg Lions Club  
Mr. Jacob B. Ebersol  
Mrs. Meredith R. Eckroat  
Ephrata Elks Lodge #1933  
Martha A. Eppley  
Paul and Elizabeth Esch  
Mr. John Esh  
Kevin and Rachael Eshleman  
Mrs. Kristine K. Eveler  
Dan and Priscilla Farmer  
Mrs. Esther E. Farmer  
Jodi and John Feyock  
Mrs. Marie Fields-Kasel

Ms. Lisa A. Figurelle  
The Financial Advisory Group  
Mrs. Margaret S. Fisher  
Tara and Art Fitzkee  
John and Frances Fleckenstein  
Mrs. Ruth Anne Foore  
Ms. Linda L. Foreman  
The Framery, Etc.  
Mrs. Emily Frenzel  
Ernie and Cathie Frey  
Ms. Sheila Fritz  
Mr. Dale Fulton  
Esther and Michael Furman  
Jay and Beth Gainer  
Ms. Jennifer M. Garefino  
Sue and Rick Gehman  
Chad and Denise Gelsing  
Ms. Janette K. Gentry  
Dr. George M. Georgelis  
Giant Direct  
Giant Food Stores LLC  
Mr. and Mrs. Douglas W. Gibson  
Mr. and Mrs. Barry G. Gilbert  
Mr. Jeffrey C. Gisslin  
Mr. and Mrs. Gerard L. Glenn  
Christian and Rachel Glick  
Click Structures  
John and Ruth Gochbauer  
Linford and Beth Ann Good  
Mr. and Mrs. Frank Goodhart  
William and Cynthia Goodman  
Barbara and Arthur Grannell  
Mrs. Jimmie Ann Graver  
Ms. Sandra E. Gray, Esq.  
Mrs. Nancy I. Graybeal  
Dr. and Mrs. Robert E. Graybill  
Dr. Nancy Jo Greenawalt  
Mr. Bennett W. Greenberg  
Jennifer E. Greenberg  
Ms. Lisa Groff  
Jan and Randy Groft  
Henry G. Groves  
Grumelli Farm Service  
Guernsey Inc.  
Fred and Stella Guion  
Mr. James A. Haines  
Michael and Darlene Hamlin  
Ms. Frances J. Handley  
Donald and Lindsay Harnish  
Mrs. Carol B. Hartley  
Evelyn and Ronald Hartmann  
Harvesting Backyard Designs LLC  
Christina L. Hausner and Michael T. Zuber  
Hazlett, Burt & Watson, Inc.  
Ms. Jill A. Heatwole  
Kitty L. Heidlebaugh  
Richard and Bonnie Heilig  
Linda and William Heineman  
Mrs. Rebecca L. Herr  
John Herr and Diane Koken  
Steve and Shirley Herzfeld  
Larry and Janet Hess

Ms. Dana N. Hess  
Ken and Joanne Hess  
Jack and Sandra Hess  
Mr. Dennis W. Hevener  
Steven C. Hibshman  
David and Kathleen Hill Byrne  
Mr. Michael Hinerdeer  
Mr. Richard A. Hoadley  
Mr. William D. Hoffman  
Christine Hogan  
Mr. Arthur D. Holgate  
Joanne and Larry Hollinger  
Erin and Shawn Holtzapple  
Peter and Susan Hondru  
Hooper, Inc.  
Ms. Joyce A. Hoover  
Mrs. Martha H. Hoover  
Cindy and Larry Horst  
Laura K. Howell  
Larry and Barbara Huber  
Kevin P. and Nancy Mayer Hughes  
Kevin and Patricia Hughes  
Mr. Bryan Hughes  
Ms. Patricia Hunt  
Gerald and Lorraine Hursh  
Mrs. Kathleen E. Jaczynski  
Mr. Bill Jamison  
Stanley and Mary Ann Johnson  
Mrs. Jeanette Y. Johnson  
Susan and Bob Joines  
Mr. and Mrs. Christopher Junkin  
Ms. Nancy F. Kauffman  
Mr. David G. Kauffman  
Mrs. Julia Kauffman-Jantzi  
Ms. Jill M. Kelley  
Carolyn O. Kendall  
Mrs. Nancy C. Kendig  
Dr. Denise M. Kenna  
Mrs. Mae K. Kerr  
Barbara and Joseph Kesselring  
William and Pamela Kiehl  
David and Ruth King  
Timothy and Carol King  
Ms. Timothea M. Kirchner  
Matt and Kelly Knouse  
Mary Ellen and Bill Kopetz  
Deborah and Keith Kragel  
Betty J. Kreider  
Dr. Robert C. Krissinger  
Mr. Donald P. Kurtz  
Aaron and Janet Kurtz  
Lancaster County Coffee Roasters  
Lancaster Honda Motorcycles & More  
Lancaster Mold, Inc.  
Dr. Kenneth R. Lander  
Mr. Ira B. Landis  
Steve and Michelle Lando  
Mr. Allen Lantz  
Mrs. Doris E. Lausch  
Jack and Mary Lausch  
Ronald Leaman and Carol Janello-Leaman

Ms. Marie E. LeFever  
Leslie and James Lemonick  
Ms. Katherine E. Leser  
Mr. Gary Lightner  
Mrs. Lynne M. Litsinger  
Christopher and Jill Long  
Longenecker's Hatchery Inc.  
Loyal Christian Benefit Association  
Ephrata Branch #1557  
Ms. Kristine C. Lundquist  
Mrs. Doris Lyons  
M&T Charitable Foundation  
Mr. David L. March  
Mrs. Betty L. Margolis  
Claude and Jane Martin  
Mr. George W. Maurer  
Mrs. Nora J. May  
Donna and Eric Mayes  
Dr. William D. McCann  
Brenda and Steuart McCleaf  
Fred, Polly and Robin Morgan  
Sue and Joe McDonald  
Ms. Carolyn McGuigan  
Mr. Richard L. McMinn  
Charles and Darlene McWilliams  
Anne and John Meeder  
Ms. Cindy S. Mellinger  
Marlise W. Mellinger  
Messick's Farm Equipment  
Paul and Gail Metzger  
Mr. Kevin L. Meyers  
Neal and Brenda Migdon  
Mrs. Sharon Milheizer  
Norma Millard  
Donald and Shirley Miller  
Mrs. Joan N. Miller  
Mrs. Saranna B. Miller  
Jeffrey Miller and Susan  
Kruppenbach  
Larry and Sally Miller  
Mrs. Judith A. Millhouse  
Pam and Ben Minardi  
MKT Metal Manufacturing  
Ms. Gail D. Monteleone  
David and Diane Moore  
Ms. Alicia Moranz  
Mr. Allen H. Morgan  
Mr. Arthur E. Morris  
Mr. Clair S. Mummau  
Rhonda and Michael Murphy  
Jere and Barbara Murphy  
Nancy and Joseph Murray  
Scott and Lauren Musser  
Phillipp and Cynthia Muth  
Narvon Run Builders LLC  
NeverWet LLC  
Dr. Kristina and Mr. William  
Newport  
Mrs. Mabel G. Nolt  
Mrs. Barbara Obetz  
Ms. Evangeline M. Olson  
Ms. Julie Osborn  
Anne Osborn

Mrs. Keri Palasz  
Lisa and Scott Palmquist  
Carol and Ronald Papson  
Paradise Masonry LLC  
Charlotte and Richard Parsons  
Joan and Wayne Paxton  
Ms. Beverly V. Piscitelli  
M. Potteiger Inc.  
Prudential Annuities  
Mr. James E. Rabine, II  
Dan and Karen Raffensperger  
Remilux, LLC  
Eric and Janet Renfer  
Cynthia E. Resch  
Ms. Patricia W. Rhoads  
Leslie and Don Rice  
Ms. Carol Richard  
Stephen and Sheri Riley  
Mr. Bruce A. Robbins  
James and Sally Roche  
Rolex Watch U.S.A., Inc.  
Mr. Dennis M. Ross  
Robert Ross  
Patti and Glen Rottmund  
Mr. Hiram M. Royer  
Mr. James W. Sahd  
St. Philip the Apostle Catholic  
Church  
Dr. and Mrs. Joel L. Samitt  
Mrs. Margaret M. Sanders  
Rick Saner and Sheila Shoemaker  
Sanitation Solutions Plus, LLC  
Mr. Alex T. Schneebacher  
Rick and Donna Schoenberger  
Schreiber Center for Pediatric  
Development  
Tim and Linda Schroeder  
Mr. David J. Schumacher  
Mr. and Mrs. Gregory J. Scott  
Sesame Temps, Inc.  
Shady Maple Farm Market &  
Smorgasbord  
Douglas and Susanne Shand  
Jerry and Ethel Shank  
Larry and Joan Sherman  
Ms. Jane A. Shipe  
Mrs. Nancy A. Shirk  
Doug and Michelle Shuff  
Mark and Rebecca Simeral  
Ms. Connie Simmons  
Mike and Grace Simpkins  
Mr. Mark R. Sindicich  
Ms. Patrice L. Smedley  
Lauren and Darren Smith  
Mr. Dale L. Smoker  
Mr. Paul Snader  
Douglas and Donna Snavely  
Denny and Sue Sneath  
Mr. Robert C. Snell  
Charles and Doreen Snyder  
Social Labor Organization of  
Hubley Mfg.  
Jack and Joni Soost

Ms. Cheryl Spaziani  
Mr. Jere D. Stabley  
Luci Steele  
Phyllis and Daniel Steinman  
Joan and Roger Stemen  
Christian and Sarah Stoltzfus  
EG Stoltzfus Homes, LLC  
Mr. and Mrs. Martin L. Strayer, III  
Sharon L. Strosser  
Mrs. Kelly L. Sumpter  
Terri and Jeff Swope  
Angela and Stephen Sydorko  
John and Anne Tennis  
Adele and Michael Terwilliger  
Thirteenth Ward Political Club Inc.  
Leticia and Joe Thompson  
Carol M. Thompson and W. F.  
Kinsey, III  
Tomlinson Bomberger Lawn Care,  
Landscape & Pest Control  
Roger and Blanche Trout  
Kenneth and Gail Twiford  
Two Dudes Painting Co.  
Vagabonds Rod & Custom Club  
Ms. Sandra Van't Zelfden  
Harla and Eric Verman  
VFW Reese Hall Post #8757  
Mountville, PA  
Victor's Italian Restaurant  
Viking Athletic Association  
Steve and Jennifer Villella  
Walmart Foundation -  
Walmart #2519  
Walmart Foundation -  
Walmart #4404  
Paul W. and Judy S. Ware  
Warfel Construction Company  
Carl and Rebecca Warner  
Mr. Richard M. Washabaugh  
Cathy and Jeffrey Wasilewski  
Ms. Donna J. Watson  
Mr. David H. Weaver  
Mr. Roy A. Weaver  
Ann A. Webber  
John Weidman Family  
Sheila and Gerald Weitzel  
Mr. James A. Wellendorf  
Ralph and Kay West  
Mr. Spencer F. Wilkerson Jr.  
Mr. Ryan Wilkison  
Carrie and George Willetts  
Ms. Julie F. Wilson  
Wolf Rock Builders LLC  
John and Connie Wolfe  
Ms. Margaret A. Woodcock  
Ms. Harriet C. York  
York Traditions Bank  
Ronald and Rebecca Zimmerman  
**Quilting Partners**  
**\$250 - \$499**  
Abel Construction Co., Inc.  
Mrs. Theresa K. Adams  
Adviser Investments LLC  
Richard and Anita Albricht

American Leak Detection  
American Legion Auxiliary  
Unit #56  
Dr. Thomas and Mrs. Barbara  
Andersen  
Rob and Beth Anderson  
Anonymous  
Mrs. Betty K. Applebach  
Armstrong World Industries, Inc.  
James and Karen Artuso  
Don R. Augsburg and  
Jane M. Rutt  
Lester and Janet Auker  
B P O Elks # 133  
Ms. Mary E. Bair  
Rick and Peggy Bare  
John and Jacqueline Barley  
Ms. Barbara R. Barnes  
Constance and Michael Barto  
Mr. Robert H. Barton  
Darlene and Don Beachy  
Sandy and Nelson Behmer  
Mr. and Mrs. Amos E. Beiler  
Bellomo & Associates, LLC  
Lois and Bud Benton  
Ms. Susan A. Billy  
Mr. Alvin Z. Blank  
Jack and Gwen Bleacher  
Ed and Cindy Blough  
Blue Ball Lioness Club  
Mr. Ray E. Boll  
Mr. Ronald E. Bolt  
Dr. Rita M. Bonchek  
Jeanette and Herman Bontrager  
Ms. Glenna R. Book  
Kris and Kevin Bouman  
Mr. Robert K. Bowman  
Mr. and Mrs. Benjamin F.  
Bowman, Jr.  
Mrs. Carlyn Bowman  
Pearson and Wendy Bownas  
David and Shirley Bravo  
Mr. Joseph T. Breneman II  
Tom and Sandi Breneman  
Breneman Printing, Inc.  
Doris H. Bronson  
Mrs. Leslie P. Broomell  
Mr. Patrick O. Brown  
Kenneth and Susan Brown  
Earl and Evelyn Buch  
Mrs. Robin L. Bucher  
Allison and Justin Bucher  
Greg Buck and Jennifer Buck  
Ms. Brenda K. Buffington  
Raymond A. Bures and  
Jackolyn M. Brinkman  
Clay and Sue Burke  
Bob and Dee Burkholder  
Burnham Holdings, Inc.  
Mrs. Patricia M. Buser  
Mr. Edward W. Bush  
Mrs. Jacqueline F. Busser  
John and Sheila Buswell  
Kristine and Timothy Butz

Ms. Angela M. Carone  
Don and Janice Carper  
Cauler Waste Disposal  
Ms. Kay F. Charles  
Mrs. Sonia Chernus  
Patricia L. Foreman  
Cobblestone Court Condominium  
Association  
Mr. John W. Conaway  
Mr. Howard Confer  
Connor Solutions  
Larry and Sarah Conte  
Mrs. Virginia K. Cormier  
Mr. Jerome L. Crotsley  
Mrs. Christine A. Curley  
Pam and Paul Currie  
Billy and Heather Davidson  
Mrs. Lucille I. Davis  
Lanie and Jeff Dean  
Jean and Ralph Deckard  
Mr. Larry L. Deemer  
Norman and Cheryl Deffibaugh  
Mr. Eric R. DeFrees  
Mr. Glenn H. Deiter  
Cheryl Denick and Gregory Smith  
Gordon and Carolyn Denlinger  
Miss Sarah Derewitz  
Ms. Rosemary F. Derr  
Harry and Barbara DeVerter  
Mr. Gregory E. Devone  
Donna and Chris Diefenderfer  
Mrs. Margaret S. Diehl  
Diehl Funeral Home & Cremation  
Center Incorporated  
Ms. Nicole A. Diem  
Mr. Clifford H. Dodge and  
Dr. Daleela G Dodge  
Andrew and Lorraine Dodge  
Mrs. Barbara S. Dohan  
Donegal Insurance Group  
Ms. Kathryn J. Doutrich  
Mr. William J. Drury  
Ms. Laura M. DuBeau  
Kate and Steve Duke  
Dutch Valley Food  
Distributors, Inc.  
Benjamin and Cindy Ebersole  
Mrs. Toni V. Ehrhart  
John and Kathy Enck  
Terry and Jodie Erb  
Jack and Wendy Erwine  
Vince and Chris Eshelman  
Mr. Norman C. Eshleman  
Mr. Raymond J. Eshleman  
Ronald and Betsy Eshleman  
Ms. Susan E. Evans  
Mr. Newell B. Everett, III  
Mr. Frederick H. Faust  
Mrs. Joanne L. Ferguson  
Mr. Bryant J. Ferris  
Mrs. Linda S. Fisher  
Jonathan and Rachel Fisher  
Peter and Tanya Fitzkee

Harry and Eileen Flick  
 Mrs. Thelma G. Flory  
 Ms. Karen D. Foltz  
 Mrs. Thelma J. Force  
 Jane K. France and  
 Christian L. Allison  
 Scott and Nora Frick  
 Richard and Susan Fritz  
 Fromm Electric Supply Corp.  
 Jennifer and Matthew Fuller  
 Roy and Jean Fuss  
 Ms. Elizabeth B. Gates  
 Judy and David Gerber  
 Mr. Christopher M. Gibson  
 Dr. and Mrs. James E. Goddard  
 Robert and Lorena Good  
 Frank and Brenda Goodhart  
 Blaine and Sherri Gorman  
 Mrs. Hilary A. Grant  
 Mr. Howard G. Groff  
 June and Richard Groff  
 Mr. Charles J. Groff  
 The Groff Children  
 Mr. Paul F. Grothe  
 Frank and Nancy Grube  
 Matthew and Cindy Guntharp  
 Bruce and Melanie Gunzenhauser  
 Harold and Roberta Haag  
 Mr. Kenneth Hagen  
 Hair and Beyond Beauty Salon/  
 Barbering Ephrata, PA  
 Mrs. Frances M. Hake  
 Mrs. Karen S. Hammel  
 Ms. Jean M. Hammer  
 Mr. Walter L. Hand  
 Donna and Mark Hansen  
 Mr. Martin C. Harnish  
 Ed and Arlene Harnish  
 Dana Harold  
 Ms. Jill A. Harsh  
 Mr. and Mrs. Bruce S. Hastings  
 Dennis and Nancy Hauenstein  
 David and Ruth Hawthorne  
 Mr. Lewis C. Hazlett  
 Mr. Thomas J. Healy  
 Mr. Johnny S. Heidelbaugh  
 Mr. Timothy L. Heindel  
 Dr. Carol A. Heintzelman  
 Mrs. LaRue M. Helm  
 Ms. Beverly F. Henry  
 Herbert, Rowland & Grubic, Inc.  
 Mr. John Henry Herr  
 Mrs. Brenda J. Herr  
 Dr. Paul W. Herr  
 Ms. Megan Herst  
 Mrs. Virginia H. Hess  
 Mrs. Ina E. Hess  
 Mr. Charles E. Hewitt  
 Melissa Hicks and Thomas  
 McCormack  
 Calvin and Janet High  
 Susan and Joseph Hindes  
 Mrs. Catharine H. Hoke  
 Andrew and Eatha Homsher  
 Mrs. Edna J. Homsher  
 James and Frances Hoover  
 Lee and Heidi Horn  
 Dennis and Deborah Hornberger  
 Ms. Cathy A. Hower  
 Mrs. Mary Humphries  
 Bryan and Christie Hunt  
 Gary and Sally Hunter  
 Mrs. Elsie E. Hursh  
 Mr. Bradley A. Igou  
 Ted and Jean Ihrke  
 Mrs. Carole B. Jennings  
 Robert and Carol Johnson  
 Mr. Richard I. Justice  
 Benjamin and Sylvia Kauffman  
 Kauffman's Fruit Farm  
 James and Mindy Kearns  
 Mr. Harold M. Keepert  
 Jody and Clarence Kegel  
 Mr. and Mrs. James Kerner  
 Lisa K. Keric, DO  
 Keystone Nitewear Co., Inc.  
 Mr. Kirby M. Kiick  
 Mrs. Carole R. Kline  
 Karen and Curt Kofroth  
 Kristen and Arthur Kopp  
 Vivian S. Kremer  
 Mr. Kenneth B. Kulp  
 Mr. Edward T. Kurek  
 Mrs. Barbara Lacek  
 The Lancaster Liederkrantz  
 Lancaster County R/C Club, Inc.  
 Lancaster Truck Repair  
 Duane and Dawn Landis  
 Mr. Dave Lavery  
 Ms. Kathryn S. Lawhun  
 John and Melissa Leader  
 Greg and Carol Lefever  
 Mrs. Ella M. Lehman  
 Ms. Sandy Lehman  
 Ms. Sarah J. Lesniara  
 Joseph and Carol Liebl  
 Lift, Inc.  
 Mr. David Liguori  
 Rev. Dr. and Mrs. William L.  
 Lindsay  
 Mr. Scott Lippman  
 LoanLogics, Inc.  
 Loeffler-Pitt Dental Associates, P.C.  
 Kevin and Diane Lorah  
 John and Susan Loughlin  
 Ms. Phyllis Lowe  
 Lowell and Barbara Luft  
 Ms. Abby Madigan  
 Ingrid and Renny Magill  
 Mr. Frank Markward Sr.  
 Joseph and Kendra Martin  
 Ms. Elizabeth H. Martin  
 Mike and Nora Martin  
 Mask-Et Services LLC  
 Shannon and Gerald Mason  
 Ms. Jessica May  
 May-Grant Associates  
 Mrs. Marjorie R. McCarthy  
 Eric and Suzanne McClellan  
 Patrick and Rebecca McClure  
 Mrs. Joan McComsey  
 Mrs. Julia M. McCourt  
 Ms. Leanne McFalls  
 Mr. Larry McIntire  
 Mr. Harry J. McKinley  
 Dr. Clark McSparren  
 Ms. Karen K. Meck  
 Dr. Persila Mertz  
 Marian and Carl Metzler  
 Karen and Ronald Michnya  
 Mrs. Judy A. Miller  
 James and Dora Miller  
 Barry and Debbie Miller  
 Mr. Michael L. Miller  
 Robert C. Miller and  
 Rhonda Hill-Miller  
 Coco Minardi  
 Becky and John Minnillo  
 Mrs. Sue Misel  
 Ms. Deborah S. Moore  
 Ms. Jessica Moore  
 John and Juli Moose  
 Mrs. Jean M. Morgan  
 Stephen and Karen Morgan  
 Stefanie and Leo Morgan  
 Mr. Steven Morse  
 William and Amy Mowbray  
 Mr. Darwin L. Mowery  
 Mrs. Barabra A. Mowrer  
 Paul A. Mueller, Jr.  
 George F. Murphy  
 Ms. Rebecca G. Murray  
 Bob and Elaine Muschlitz  
 Regina and Gerald Musser  
 James and Deborah Negley  
 Mr. and Mrs. Heath Nell  
 Mr. and Mrs. Troy L. Neville  
 Mary Ann and Thomas Newton  
 Barbara and Daniel Nolan  
 Jim and Kay Nolt  
 Mr. Marvin M. Nolt  
 Mrs. Peggy A. Ober  
 Mr. Richard E. Olson  
 Mr. Steven Oyer  
 John and Karen Palumbo  
 Parrot Heads in Amish Paradise  
 Inc.  
 Ms. Elizabeth L. Payne  
 Mrs. Karen M. Peck  
 Mrs. Dolores X. Perezous  
 Mrs. D. Jane Peters  
 David and Ruth Petersheim  
 Mr. Mark W. Phillips  
 Ms. Kate E. Podvia  
 Ms. Barbara G. Powell  
 Benjamin and Olga Pratt  
 Mr. N. Scott Qualls  
 Neal and Cathy Quarles  
 Mrs. Ruth M. Randa  
 Ms. Barbara J. Rathbone-Frank  
 Mrs. Fae L. Reber  
 Mr. Harry E. Redinger  
 Mr. Donald C. Reed  
 Regions Bank  
 Mrs. Helen Reppert  
 Mrs. Marsha A. Rheam  
 Mr. Russell G. Richelderfer  
 Michael and Jeanne Riley  
 Timothy and Kathryn Risser  
 Mr. Glenn T. Ritchey  
 John and Ann Roda  
 Richard and Neena Rodgers  
 Mr. Tobias H. Rohrer  
 Mrs. Helen E. Rohrer  
 Dr. and Mrs. Robert L. Roschel  
 Rosenberger of North America LLC  
 Frank J. Rosol, Jr.  
 Mrs. Mary Jane Rossiter  
 Ms. Treba W. Ruhl  
 Gail and Charles Ruhl  
 Mr. Larry E. Ruth  
 Sue Salisbury Mowrer and  
 Jim Mowrer  
 Samuel Geltman & Co.  
 Mr. Chris Sanders  
 Ms. Gail A. Sanderson  
 Ms. Sharon Sapp  
 Ms. Carolyn Schaefer  
 Mr. and Mrs. J. Jude Schlager  
 Mr. and Mrs. Douglas L.  
 Schmuckle  
 Francis Schwenk  
 Judith and Edmund Scott  
 Mr. Michael Scott  
 Ms. Joanie F. Seitzinger  
 Steven J. Sellers and John Matussek  
 Mr. John L. Shannon  
 Ms. Donna L. Shaub  
 Gene and Tanis Shaw  
 Mr. Guy A. Shawkey  
 Mike and Nancy Shenk  
 Ronald and Cindy Simmons  
 Ms. Elaine B. Sinclair  
 Mr. Benjamin S. Smoker  
 Mr. Jonathan E. Smucker  
 Brian and Janis Snavely  
 Mrs. Doris J. Sneath  
 Miss Robin Snyder  
 Mr. Ralph E. Spayd  
 St. John's Anglican Church  
 Lauren and Ryan Stadel  
 Mrs. Mary A. Stauffer  
 Andrew and Celene Steckel  
 John and Mary Stefan  
 Mrs. Rose L. Stetler  
 Ms. Patricia A. Stetler  
 Pat and Steve Stockwell  
 Ms. Susan L. Stoltzfus  
 Mr. John K. Stoltzfus  
 Ronald and Sandra Stombaugh  
 Mrs. Marie E. Stone  
 Kristen and Christopher Straub  
 Bob and Barbara Strickler  
 Dr. Mark W. Stull  
 Mr. Gregory J. Sullivan  
 Claudia and Kevin Summerson  
 Surface America, Inc.  
 David and Shelby Swartley  
 Mr. and Mrs. David Sweigart  
 Tony and Anne Sweigart  
 Mr. John G. Swinehart  
 Mrs. Marjorie N. Sylvis  
 Tanger Outlets National Harbor  
 Jere and Carol Tangert  
 Steven and Sherri Taylor  
 Ms. Sandra A. Tezak  
 Charles and Elizabeth Till  
 Jim and Saralee Tollinger  
 Mr. Stephen W. Trapnell  
 John and Deborah Trimble  
 Trinity Lutheran Church  
 Mr. and Mrs. Leo Tubay  
 Kimberly and Scott Venhuizen  
 Mr. Timothy Veres  
 Mr. Jack R. Vogel  
 Mrs. Cheryl Wagner  
 L. Gordon Wagner  
 Chuck and Margie Walker  
 Mrs. Gail L. Walker  
 Wall-to-Wall Floor Covering  
 Walmart Foundation -  
 Walmart #1529  
 Marianna Wanner  
 Mr. Mark Warner  
 Ms. Clarissa Weeks  
 Stephen and Elizabeth Weibel  
 Ms. Janet C. Weiss  
 Clarence and Beverly Wenger  
 Donald and Ruby Wenger  
 Mrs. Betty J. Werner  
 Chet and Jackie Wertz  
 West Shore Elks Lodge #2257  
 John and Lucinda Whirt  
 Ms. Donna R. Wilmot  
 Joe and Christine Wirbick  
 Barbara and Roger Wiseman  
 Mrs. Katherine Witbeck  
 Mr. Arthur A. Withers  
 Jeff and Kathy Witman  
 York Ag Products Inc.  
 Bonnie Zehr and Jerry Hess  
 Mr. John J. Zimmerman  
 Abner and Joann Zimmerman  
 Robin and Sam Zink  
 Mr. Daniel G. Zook  
**Journey Partners**  
**\$60 - \$249**  
 12:34 MicroTechnologies Inc.  
 A Self-Storage  
 Frank and Margery Abel  
 Acadia Acquisition, Inc.  
 Ace the Party Place  
 John and Janice Ackerman  
 Ms. Evelyn M. Adams  
 Adcock Bros Inc

Mr. Aristide Adelizzi  
ADMI Global  
John and Carol Adornetto  
Linda and Russell Adsitt  
Advanced Food Products LLC  
Aerzen USA  
AHF Products  
Ms. Linda M. Alexander  
Ms. Pamela L. Alexander  
Mr. Donald W. Allen  
Robert and Doris Allen  
Mark and Lisa Allison  
Ms. Nancy B. Altdoerffer  
Gerald and Barbi Altland  
Altruista Health  
Mrs. Jacqueline E. Ambrosius  
Andrew and Sylvia Amway  
Mr. David E. Anderson  
Ms. Doreen K. Anderson  
Mrs. Nancy V. Anderson  
Ms. Kathy L. Andreatti  
Andrew T. Scheid Funeral Home  
Mr. John J. Andrews  
Mr. and Mrs. Burnell Andrews  
Patti and Tom Anewalt  
Dick and Polly Anglin  
Anonymous  
Bob and Ginny Anspach  
Drew and Joyce Anthon  
Mr. and Mrs. James W. Appel  
Aramark  
Mr. Daniel J. Archer  
Sharon and Thomas Arcudi  
Ms. Susan L. Armer  
Mrs. Louise E. Arms  
William and Barbara Arms  
James and Mary Ann Armstrong  
Mr. Palmer H. Arnold  
Mrs. Carole N. Ashby  
Association Megalohorition of  
America  
Mrs. Lena B. Atkins  
Peggy and Tom Atkins  
Atlantic Northeast District Church  
of the Brethren  
Russell and Darlene Auker  
Mr. Bradley L. Auker  
Todd and Melissa Auker  
Austin H. Eberly Funeral  
Home, Inc.  
Mrs. Deborah D. Avis  
Mr. and Mrs. Jere Axe  
Timothy and Carol Axe  
B & F Partners  
Mrs. Gwendolyn H. Bachman  
Ms. Mary E. Bachman  
Ms. Denise Bachman  
Harris and Janet Baderak  
Kerry and Debra Bagnoli  
Mrs. Nancy J. Bailey  
Mrs. Mary L. Bailey  
Michael and Debra Bailey  
Clyde and Linda Bailey

Mr. and Mrs. N. Alan Bair  
Mr. Richard N. Baird  
Mr. Edward D. Baker  
Mr. David A. Baker  
Dee Baker  
Ms. Joanne L. Baker  
John and Vicki Baker  
Miss Colby L. Baker  
Ken and Joyce Baker  
Baker Tilly  
Alison and Joe Bakey  
Ms. Ginger Balchunas  
Mrs. Fran E. Baldwin  
Deborah and Richard Ball  
Mr. David T. Ballow  
Mrs. Mary Lou Balmer  
Mr. Ralph W. Bankert  
Ms. Paulett Banks  
Mike and Donna Bare  
Chris and Donna Bare  
John and Ruth Bare  
Marilyn and Bob Bare  
Ms. Tracy Barley  
Harry and Keri Barnes  
Mr. Rick Barnhardt  
Ms. Emily J. Barnhart  
Sue and John Baron  
Kenneth and Marie Baron  
Brian and Leslie Barr  
Barr Davis Auctioneers, LLC  
Ms. Lisa M. Barshinger  
Nancy and Chris Barton  
Mr. and Mrs. Scott Barton  
Rodney and Lois Bates  
Debbie J. Baublitz  
Fred and Vivian Bauder  
Mr. Matthew Bauer  
Rev. Phyllis J. Baum  
Ed and Barbara Baylor  
Mimi and Bob Beall  
Jerry and Donna Beard  
Karen and Tim Beaver  
Mrs. Ethel M. Beck  
Mr. and Mrs. Ronald J. Beck  
William and Janet Becker  
James and Patti Becker  
Michael and Shelly Bedard  
Mr. Tasnim Beg  
Mrs. Beverly Y. Behun  
Daniel and Anna Beiler  
Mrs. Anna Mary Beiler  
Mr. Christ Beiler  
Ms. J. Marlene Beiler  
Mr. Aaron E. Beiler  
Craig and Kamille Beittel  
Dr. William E. Bell and  
Dr. Gail A. McGuinness  
Lt. Gen. and Mrs. Dennis L.  
Benchoff  
Beverly and Barry Bender  
Joyce and Ron Benedict  
Ms. Margaret Benik  
Mrs. Suzanne E. Benner

Benny Bennington's Ceramic Tile  
Solutions  
Mrs. Jill R. Benson  
Gilbert and Jean Benson  
Ginny and Tom Bentley  
Jim and Judi Bergdoll  
Ms. Beverly Berkheimer  
Lisa and Horst Bernhard  
Mrs. Susan E. Berntheizel  
Mrs. Loine F. Bert  
Bertolet Construction Corporation  
Bertz, Hess & Co., LLP  
Berwyn Lawnmower LLC  
Larry Bianco  
Joyce and John Bice  
Mr. Henry R. Bielmyer  
Mr. William Michael Bierbower  
Karen and Greg Bierly  
Jacqueline and Joe Bilder  
Ms. Verna M. Billmeyer  
William and Fay Binzen  
Mrs. Phyllis F. Birkhimer  
Ned and Kirsten Bishop  
Rick and Mary Bisking  
Donald and Virginia Bissinger  
Mr. Jeffrey Bitner  
Mr. Michael Bivona  
Mr. Clifford Bixler  
Patti and Robert Bixler  
John and Barbara Blank  
Mr. Jeffrey S. Bleacher  
Carol and Charles Bleacher  
Dewey and Nadine Bleacher  
John and Sharon Blecher  
Ms. Anita Blizzard  
Laurin and Ted Bloom  
Mrs. Phyllis A. Blymire  
Ms. Judy Blymire  
Ms. Linda G. Bohlayer  
Ms. Nancy A. Bohn  
David E. Boland and  
James G. Brown  
Robert and Reba Bolinger  
Laura Boll-Mack and  
Kelvin L. Mack  
Mrs. Tina Boltz  
Gregory and Susan Bomberger  
Mr. Stephen R. Bomberger  
Terry Lowe Bonelli and  
Matt Bonelli  
Steven and Rae Bonfante  
Annette and Gary Bonfante  
Bruce and Kathleen Book  
Steve and Teddi Book  
Ms. Melinda J. Book  
Larry and Linda Boozer  
Ms. Nancy C. Borremans  
Ms. Deborah M. Bortle  
Mr. Lee A. Bossert  
John and Ruby Botham  
Ms. Kelly Bottenfield  
Mrs. Kathleen M. Bouhdary  
Ms. Adrienne Boullianne

Mrs. Ann W. Bounds  
Mr. H. David Bower  
April and Rich Bowermaster  
Ms. Karen Bowers  
Mrs. Thelma E. Bowman  
Janice and Frank Bowman  
Mr. Wallace L. Boyden  
Mrs. Joyce E. Boyer  
Mrs. Mary Ann Boyle  
Gerald and Lavinia Brackbill  
Mrs. Miriam Bracken  
Mrs. Nancy Bradfield  
Mrs. Frances Bradley  
Mrs. Karen E. Bradshaw  
Richard Braine and  
Carol Burkholder  
Jeffrey and Martha Brandt  
Michael and Maureen Bratton  
Ms. Laura Brayman  
Breakaway Snacks, Inc.  
Judy and John Breckenridge  
Thomas and Diane Breneman  
Don and Jackie Brennan  
Ms. Linda S.B. Brenneman  
Dale and Colleen Brenneman  
Mr. Mark A. Brenner  
Mr. Vincent C. Bresch  
Mrs. Diane M. Bretz  
MacGregor and Jennifer Brillhart  
Mrs. Ann S. Britton  
Robin and Patricia Brobst  
Cindy and Dave Brooks  
Debra and Kenneth Brooks  
Drs. Robert and Donna Brosbe  
Ms. Michelle R. Brown  
Mrs. Margaret H. Brown  
Ms. Martha E. Brown  
Helen and Jennifer Brown  
Mr. Jeffrey T. Brown  
Mrs. Nancy L. Brown  
Mrs. Carol L. Brown  
Michael and Anca Browne  
Beverly and Ronald Brubaker  
Meg and Peter Brubaker  
Ms. Nancy W. Brubaker  
Warren and Mary Brubaker  
John and Elaine Brubaker  
Jim and Linda Brubaker  
Ms. Martha L. Brubaker  
Esther and Elva Brubaker  
Mrs. Linda Bruce  
Ben and Amanda Bruckhart  
Dan and Ruth Ann Bruner  
Mr. C. John Bryer  
Mrs. Ruth S. Bryson  
Buch Funeral Home Inc.  
Lynn and Edward Buchheim  
Mrs. Carol A. Buckwalter  
Steve and Sandra Buffington  
Deborah and Barry Buhay  
Mr. Paul Buhay  
Building Bridges Foundation at  
Anderson Farm

Ms. Karen M. Buller  
Ms. Amy Bullivant  
Mrs. Rebecca S. Bumsted  
Mr. Kevin R. Bunn  
Mrs. Patricia Y. Bunting  
Tom and Bonnie Burgum  
Mr. Walter R. Burkett  
Gerald and Patricia Burkhart  
Mr. and Mrs. H. Clay Burkholder  
David and Connie Burkholder  
John and Janet Burns  
Mr. Edward G. Burns  
Mrs. Mary Burton Horne  
James and Heidi Bushong  
Ned and Lynda Bushong  
Mrs. MaryLou A. Butler  
John W. Byers and Patricia A. Vesper  
Mr. Bruce C. Byram  
Mrs. Amy Davish Byrom  
Michelle and Chris Cable  
Charles and Terry Cadoura  
Cafe Chocolate of Litzitz  
The Cake Creators  
George and Mary Calder  
Mr. Philip Caliendo  
Mike and Neysa Callahan  
Calvary Church  
Calvary Evangelical  
Lutheran Church  
Calvary Monument Bible Church  
Laurel V. Campbell and  
Richard Canard  
Mrs. Lorrene K. Campbell  
Roseanne and Vincent Candiello  
Ms. Stephanie Carfley  
Dr. Michael Carlson  
Jim and Joan Carpenter  
John and Pat Carpenter  
Ed and Barbara Carr  
Mr. Patrick Carroll  
Ms. Sara B. Carroll  
Mr. Harry E. Carter  
Ms. Barbara M. Carver  
Ed and Sally Caskey  
Mrs. Janet P. Caum  
Cedar Lane Chapel  
Cedar Run Realty Inc.  
Center Stage Salon  
Century 21 Dale Realty Co.  
Mr. and Mrs. John M. Chamberlain  
Mr. Mark Chamberlain  
Mrs. Huoy T. Chan  
Ms. Lynn Chapman  
Ms. Loriene M. Chappory  
CHARIS Insurance  
Mrs. Willaline Charles  
Jeff and Leona Charles  
Vince and Kathy Charles  
Mr. John V. Charney  
Phil and Gloria Chmiel  
Il Jun Chon, MD  
JoAnn and Steve Chronister  
Todd and Mary Chronister

Mrs. Jean Chubb  
 Blanche and Edgar Church  
 Dr. Susan K. Ciampaglia and  
 Christopher S. Ciampaglia  
 Mrs. Arlene H. Clark  
 Ms. Sandra J. Clark  
 Mrs. Linda E. Clark  
 Mr. and Mrs. Merrell F. Clark  
 Mrs. Molly E. Clark  
 Russell and Valerie Clark  
 Mr. John L. Clark  
 Mr. Robert Clausen  
 Chip and Mary Clavier  
 Ms. F. Joan Clelan  
 Mr. and Mrs. Thomas C. Clements  
 Troy and Katelyn Clements  
 Mr. Corey Clinger  
 Clofine Dairy & Food Products, Inc.  
 Clover Farms Dairy Co.  
 Clyde W. Kraft Funeral Home, Inc.  
 Mr. Michael Coble  
 Ms. Maria Cocco  
 Mr. and Mrs. John Cochran  
 Darlene and Frank Cole  
 Columbia Fish & Game  
 Association  
 Mr. Wayne H. Colyer  
 Ms. Crystal G. Combs  
 Mr. and Mrs. Ronald L. Comfort  
 Community Fire Company of  
 Rexmont Pennsylvania  
 Ms. Colleen A. Conant  
 Mrs. Rebecca A. Confer  
 Confluent Health  
 Janet Conley  
 Mrs. Aleta S. Connell  
 Mr. Brad Conquest  
 Mrs. Martha Constantinos  
 Ed and Ann Conway  
 Patrick and Cheryl Cook  
 Rev. Richard P. Cook  
 Mrs. Judith G. Cook  
 Ms. Mary E. Coolidge  
 Mr. Robert R. Cooper  
 Mr. Randall M. Cooper  
 Gene and Joanne Cope  
 Pete and Cindy Cope  
 Mrs. Mary D. Corcoran  
 Mrs. Marlene L. Corcoran  
 Mr. Thomas Cornett  
 Ms. Blanche B. Corrigan  
 Ms. Betsey F. Corrigan  
 The Country Store  
 Covanta Lancaster  
 Ms. Faith S. Cowell  
 Ms. Cathy S. Cox  
 Ms. Colleen A. Crammer  
 Mr. Wayne C. Crist  
 Mrs. Jean K. Crist  
 Robert and Julie Crnkovich  
 Bill and Vickie Crockett  
 Mrs. Paula C. Crooke  
 Sandy and Gary Cross  
 Shelly and Jerry Crossley  
 Mrs. Carolyn J. Crouse  
 Fred and Louise Crouter  
 Ms. Jereann L. Crowley  
 Crum & Forster  
 Ms. Robin E. Crusse  
 Charlie and Judy Culbertson  
 Mr. Robert E. Cumens  
 Richard and Nancy Cummings  
 Michael and Teri Cunniff  
 Kerry and Tracy Cunningham  
 Curtis Cruse Construction Inc.  
 Mr. and Mrs. Angelo A. Cusatis  
 Donald and Diana Daily  
 Dale-Way Auto Body Center Corp.  
 Ms. Dianne E. Daniel  
 Victor and Carmela Daniel  
 Mr. and Mrs. Paul D. Daniels  
 Mrs. Barbara J. Dannatt  
 Ms. Susan E. Danyo  
 Ann Darrenkamp  
 Stephen and Gaynel Daugherty  
 Joan and Thomas Dautrich  
 Davcon Relocation Services  
 The David J. Joseph Company  
 Mr. Thomas Davies  
 Sally and Geoffrey Davis  
 Mr. Jeffrey M. Davis  
 Marsha C. Davis  
 John and Linda Davis  
 Jeffrey and Darriel Davis  
 Mrs. Deanna E. Deen  
 Mr. Arthur L. Deering  
 Catherine A. DeGuire and  
 Robert Allen  
 M. Lena DeGuire  
 Ms. Katrina DeLauter  
 Dell Computer Corp.  
 James and Bonita Demetriu  
 Joann and Allen Demming  
 Joan and Tom Dempsey  
 Ms. Deborah A. Denham  
 Mark and Kathleen Denlinger  
 Mr. and Mrs. Dale R. Denlinger  
 Mr. Donald E. Denlinger  
 Marianne and James DeRosa  
 Jeff and Cindy Derr  
 Mrs. Patricia A. Derstler  
 Design Collective, Inc.  
 Mr. and Mrs. George C. Desmond  
 Mr. Carl Detwiler  
 Ms. E. Anne Detwiler  
 Charles and Nancy Deutsch  
 Carolyn and Benjamin DeVerter  
 Mrs. Dolores D. Di Ubaldo  
 Diana Lord Adam Trust DTD  
 Mrs. Susan Dickey  
 Mrs. Josephine S. Dick  
 Ms. Barbara J. Dickinson  
 Mrs. Dorothy L. Dickinson  
 Mr. Robert A. Dickman  
 Ms. Denise Susan Dickson  
 Mark and Trudy Diehl  
 Mr. Joseph Diequez  
 Norm and Patty Diffendall  
 Catherine E. DiGiusto  
 Dan Diller and Dot Polito  
 Mrs. Celeste A. DiMarco Retterer  
 Mr. James B. Dix  
 Dale and Darla Doll  
 Domani Wealth  
 Mary and Paul Donecker  
 Donegal High School  
 Donegal Insurance Group  
 Donnelley Financial Solutions  
 Ms. Carol A. Donohoe  
 Mrs. Mary E. Dorenkamp  
 Mrs. Bette L. Dorsey  
 Keri and Todd Dorwart  
 Mrs. Pamela K. Dougherty  
 Mrs. Melanie M. Dougherty  
 Lisa and Keith Doutrich  
 Gail and Dovalovsky  
 Ms. Lori Doyle  
 Ms. Teresa J. Drager  
 Ms. Marilyn L. Drake  
 Dorothy and David Dreibelbis  
 Eva and Bob Drummond  
 Ms. Deborah J. Drury  
 Mr. Clyde A. Dubble  
 Mrs. Yvonne M. Duncan  
 Mr. Bob Dunkelberger  
 Lisa and Don Dunksers  
 Doris and Gerald Dunkle  
 Tom and Janice Dunlevy  
 Mrs. Fay L. Dunn  
 Mr. Pierce Dunn  
 Debra and Michael Dunton  
 James and Cheryl Duprey  
 Thomas and Janice Dusek  
 David M. Dvorchak  
 Ms. Anne-Marie Dyer  
 Maija and Chris Dyke  
 Eastern Lancaster County  
 Rod & Gun Club  
 Mr. and Mrs. Richard Eastman  
 Ms. Cathy L. Eberly  
 Mrs. Barbara B. Eberly  
 Mr. Jeff R. Eberly and  
 Dr. Susan J. Atkins  
 Mary and Alvin Ebersol  
 Debra and Craig Ebersole  
 Mr. Jim Eby  
 Mrs. Nina Eckert  
 Mrs. Kathleen S. Eckinger  
 Mrs. Diane M. Eckman  
 Geoff and Jeannette Eddowes  
 Dick and Tina Eddy  
 Ms. Victoria S. Edgerley  
 Kay and Harold Edris  
 Mrs. Romaine L. Edwards  
 Helen and Richard Eelman  
 Miss Kimberly Ehrhart  
 Philip and Barbara Ehrhart  
 Ms. Chloé R. Eichelberger  
 Nathan and Cynthia Eifert  
 Mrs. Elizabeth Elko  
 Mrs. Doris E. Ellis  
 Ms. Jan L. Elsen  
 Ms. Christine Emswiler  
 Dave and Cathy Enck  
 Karin and Kenneth Enck  
 Jack and Beverly Enco  
 Brigitte and Paul Englert  
 EPA Analytical Chemistry  
 Laboratory  
 Mr. Walter R. Eppehimer  
 Ms. Barbara P. Epps  
 Equinox Hotels  
 Glen and Nancy Erb  
 Mr. Robert K. Ernst  
 Mr. Ben B. Esch  
 David and Patricia Eschbach  
 Eschbach Bus Service  
 Esh General Store  
 Jay and Mary Lou Eshbach  
 Ms. Sandra K. Eshelman  
 Ms. Lark E. Eshleman  
 Jim and Marie Eshleman  
 Mr. Jesse R. Eshleman  
 Terry and Donna Eshleman  
 S. Kendrick Eshleman III, M.D.  
 Ms. Ellen Eshleman  
 Brendy and Rob Esmond  
 Mrs. Joan E. Espenshade  
 Mrs. Andrea Esposito  
 Etzweiler-Koller Funeral Homes  
 Eurofins Lancaster Laboratories  
 Environmental  
 Evangelical Lutheran Friedens  
 Church  
 Carole and Charles Evans  
 Lynn and Sue Eveler  
 Mr. David Everhart  
 Mrs. Mary Jo Everhart  
 Ms. Ella A. Evrard  
 Mr. Thomas W. Fadely  
 Mr. Bradley A. Faesel  
 Ms. Georgina D. Fahnestock  
 Farm Women #15  
 Wendy and David Farmer  
 Richard and Barbara Farneth  
 Ms. Linda Faucett  
 Judy and Walt Faulkner  
 Mr. Henry K. Faus  
 Loretta F. Fausnacht  
 Kevin and Sharon Fay  
 Sharon and Andrew Fay  
 Mr. and Mrs. John Felegi, Jr.  
 Mr. Richard J. Fellows  
 Marilyn K. Felter  
 Dudley and Sarah Feltham  
 Mr. Jeffrey Feltman  
 Mr. Jerold Fernee  
 Ferry Freedom Acres LLC  
 Mrs. Sally L. Fessler  
 Mr. William D. Fetherbay  
 Mr. James H. Fetter  
 Stephen Fetterman  
 Ms. Sandy Fichthorn  
 Mrs. Doris Fick  
 Mrs. Kathryn H. Filling  
 Gorman and Carol Findley  
 Carl M. Fink and Karen Narvol  
 Fire Line Equipment, LLC  
 Firestop Solutions, Inc.  
 First Presbyterian Church of York  
 Ms. Debra Fischer  
 Mr. Samuel E. Fisher  
 Mrs. Suzanne H. Fisher  
 Mrs. Becky S. Fisher  
 Barbara and Levi Fisher  
 Mr. Melvin S. Fisher  
 Mr. Matthew J. Fisher  
 Mrs. Rebecca S. Fisher  
 Ms. Helen L. Fisher  
 Mr. Justin T. Fitzgerald  
 Mrs. Eleanor J. Fitzgerald  
 Daniel and Louise Fitzpatrick  
 Samuel and Erma Flaharty  
 Ms. Elizabeth M. Flaharty  
 John and Dawn Flaharty  
 Ms. Priscilla Flaud  
 Mr. Russell M. Flick  
 Sonia and Ritchie Flinchbaugh  
 Mr. Joseph G. Fliss  
 Florida Tile Industries, Inc.  
 Ms. Katherine K. Flouras  
 Foresters of America Court  
 Susquehanna 235  
 Brad and Emily Forrey  
 Michael and Sally Forry  
 Kevin and Whitney Forster  
 Mr. Todd L. Foster  
 Mrs. Elizabeth Foster  
 Four Seasons Produce, Inc.  
 Mr. and Mrs. John A. Fowler  
 James and Elaine Fox  
 Ms. Mavis T. Fox  
 Ms. Penny Fox  
 Joan and Michael Fox  
 Linda and Charles Foye  
 Ms. Lita Fraley  
 Mrs. Beverly J. Frank  
 Mr. Robert R. Frank  
 Mr. Ernie R. Frank  
 Kevin and Dorothy Franklin  
 Fred Heistand Automotive, Inc.  
 Dr. and Mrs. David W. Frederick  
 Nancy and Jerry Frederick  
 Mrs. Sydne I. Frederickson  
 Freedom Valley Worship Center  
 Ms. Jane L. Freeman  
 Mrs. Shirley H. Frey  
 Ms. Maureen Fritz  
 Mr. and Mrs. Jon Stephen Fritz  
 Ms. Ann Froelich  
 Ms. Sandra J. Fry  
 Robert and Linda Fry  
 Mr. Joshua Fry  
 Mr. James Fry  
 Mrs. Patricia S. Fry

Kenneth and Phyllis Fryberger  
 Thomas and Elaine Fulmer  
 Katie and Dave Fulton  
 John and Shirley Funk  
 Ms. Cherie A. Gabreski  
 Gage Personnel  
 Mr. Glenn E. Gainer  
 Mrs. Cheryl L. Gainer  
 Ms. Veronica L. Gallagher  
 Mrs. Carol K. Gallagher  
 Ms. Jeanne McDonnell  
 Gammache  
 Buddy and Kathy Ganse  
 Karen and Eugene Garber  
 Mrs. Jane Gardner  
 Ann and Don Garee  
 Bob and Shirley Garrett  
 Mr. Robert J. Garrett  
 Mr. John A. Garrett  
 Ms. Betty L. Garrett  
 Sue and Chuck Garrett  
 Ed and Kathleen Garvey  
 B.J. Garzon  
 William and Patricia Gault  
 Ms. Rachel Gawn  
 Dawn and Dennis Gearhart  
 Howard and Beth Gebhard  
 Mrs. Isabel M. Gehr  
 Jerry and Linda Geib  
 Charles and Diane Geib  
 Robert and Mary Geib  
 Frank and Jean Geiger  
 Geiple Funeral Home Incorporated  
 Frank and Joyce Geist  
 General Dynamics Mission  
 Systems  
 Mrs. Shirley M. Gensemer  
 Mr. William R. George  
 Tina K. and George A. Georges  
 Tawni and Robert Gerfertz  
 Mrs. Bernice K. Gerhart  
 Mr. Earl B. Gerlach  
 Dennis and Jane Getz  
 Dawn and James Giandalia  
 Gail and Cole Giangrande  
 Henry and Joan Gibbel  
 Mr. Robert Gibson  
 Ms. Brigitte Gibson  
 Jim and Janet Gilpin  
 Mrs. Sandra X. Giltz  
 Cora Lynn and James Gingrich  
 Steve and Beth Gingrich  
 John and Soni Gingrich  
 Bob and Sandy Gipe  
 Ms. Anita S. Girvin  
 Mrs. Beverly A. Holler Girvin  
 Robin and Larry Gise  
 Kurt and Anne Gjerde  
 Ms. Jean L. Glassey  
 David and Susan Glick  
 Ms. Lydia Glick  
 David and Susie Glick  
 Mr. Joseph K. Glick  
 Lynn and Vincent Glielmi  
 Robert and Rhoda Glover  
 Mrs. Charlotte M. Glover  
 Mark and Cathy Glowacki  
 Gochenauer Kennels Inc.  
 Mrs. June R. Gochenour  
 Mrs. Ethel Gochnauer  
 Samuel and Loretta Gochnauer  
 Mr. and Mrs. Walter W. Godfrey  
 Mike and Marcy Goehrig  
 Edward and Roberta Golden  
 Mr. Paul Golden  
 Dr. Anna L. Goldman  
 Mark and Beverly Gooch  
 Mr. Warren B. Good  
 Ms. Kimberly Good  
 Alton and Jane Good  
 J. Michael and Karen Good  
 Ronald and Beth Good  
 Ms. Rachel Good  
 Chap. Ellen E. Good  
 Ken and Joanna Good  
 Mark and Pamela Good  
 Mr. Glenn W. Good  
 Mr. Carl G. Good  
 Good Sipler Funeral Home &  
 Cremation Centre, Inc.  
 Gary and Cindy Goodhart  
 Ed and Judy Goodhart  
 Jerry and Linda Goodling  
 Mr. Harry R. Goodling  
 Stan and Jo Goodman  
 Rebecca and Timothy Goonan  
 Mr. Randal L. Goshert  
 Brandon and Becky Goss  
 Grafton Seventh-Day  
 Adventist Church  
 Wendy and Trevor Graham  
 Mrs. Maria P. Grant  
 Ms. Sheila Gray  
 Ammon and Pat Graybill  
 Mel and Alma Graybill  
 Mrs. Doris J. Graybill  
 David Grebinger  
 Mr. Richard E. Green  
 Green Valley Onion Company, Inc.  
 Mr. William Greene  
 Lisa and Jeff Greener  
 Molly and Judah Greenzaid  
 Ted and Maria Gregg  
 Mrs. Elizabeth J. Greider  
 Mr. James G. Greiner  
 Greiner Industries, Inc.  
 Cynthia Griffith  
 Ms. Robin A. Griffith  
 Earl and Susan Groff  
 Mrs. Jacqueline H. Groff  
 Chris and Gary Groff  
 Mr. Hershey Groff Jr.  
 Ms. Kathleen Groff  
 Mr. David K. Grosh  
 Mr. William G. Gross  
 Gloria and Robert Grossman  
 Ms. Treva A. Grove  
 Gary and Deb Grube  
 Mr. Robert C. Grubic  
 Mr. Anthony F. Guillo Jr.  
 Kathleen and David Gulya  
 Ken and Mimi Gundel  
 Victor and Ruth Gunst  
 Kathy and Jonathan Gyorke  
 Kristen and Justin Haase  
 Mr. Eugene H. Hackman  
 Mr. Casey J. Hagen  
 David and Nancy Hager  
 William and Linda Hagey  
 Mr. and Mrs. William Haiges  
 Mrs. Beverly S. Haldeman  
 Mr. Sheldon H. Hall  
 Ms. Kristi R. Hall  
 Ray and Paula Hallacher  
 Haller Enterprises, Inc.  
 John and Audrey Hallgren  
 John and Deb Hambleton  
 Mr. Edgar A. Hambleton  
 Mrs. Rebecca M. Hambleton  
 Phyllis and Gerald Hamme  
 Mr. Robert L. Hammer  
 Mr. Todd L. Hammer  
 Mr. Robert S. Haner  
 Ms. Leigh C. Hansen  
 Ms. Nancy Hansen  
 Ms. Belinda Harber  
 Mrs. Jessie L. Harnish  
 Joy and David Harnish  
 Ms. Barbara Harr  
 Mr. Dave Harrah  
 Dr. and Mrs. Miles D. Harringer  
 Mrs. Joan B. Harrington  
 Ms. Jo Ann Harris  
 Mr. Mike Harris  
 Michael and Kimberly Harrison  
 Larry and Linda Harsh  
 Mrs. Lori Harter  
 Kim and Peter Harty  
 Roger G. and Kathy E. Harvey  
 Ed and Florence Hauck  
 Dr. and Mrs. H. Lester Haverstick  
 Mrs. Beth A. Hawk  
 Mr. Lee B. Hawthorne  
 Ms. Linda C. Hayes  
 Bendu H. Haynes  
 Mr. Donald E. Heaps Sr.  
 Fred and Shannon Heavner  
 Ms. Glenna Heckert  
 Ms. Dawn E. Heefner  
 Mrs. Joyce E. Heinaman  
 Mr. Robert L. Heindel  
 Melissa and Mark Heise  
 Daniel and Deborah Heisey  
 Elwood and Mary Anne Heisey  
 Mrs. Betty A. Heisey  
 Miss Sandra L. Heisey  
 Mr. Charles Heisey  
 Violet F. Helenthal  
 Mrs. Lois G. Heller  
 Jim and Kitty Heller  
 Mr. Paul W. Helm  
 Nick and Erica Helmick  
 Vicky and John Hemperly  
 Richard and Carol Hendershot  
 Mr. Edgar T. Henderson  
 Mr. Michael Henderson  
 Mrs. Deborah L. Hendrie  
 Glenn and Laura Henry  
 Ms. Carole S. Henry  
 Ms. Toni Hensley  
 Liz and Jim Herb  
 Herbein + Company, Inc.  
 Mr. and Mrs. Gary Herbert  
 Ralph and Dawn Herman  
 Mrs. Helen Y. Heron  
 Bonita and Larry Herr  
 Carolyn and Carl Herr  
 Cynthia and Thomas Herr  
 Lori L. Herr and John N. Thomas  
 Mr. John H. Herr, Jr.  
 Mr. Thomas P. Herring Jr.  
 Mrs. Sharon L. Hershey  
 Mr. Douglas J. Hershey  
 Ms. Jennifer Hershey  
 Marlin and Barbara Hershey  
 Family  
 Louis and Charmaine Hershey  
 Mrs. Kathy Hershey  
 Diane and Richard Hershey  
 Abe and Linda Hershey  
 Robert and Patricia Hershock  
 Shannon and Sheila Hertzog  
 Ms. Jean Hess  
 Mrs. Rose Mary Hess  
 Daniel and Marijane Hess  
 Carl and Lynn Hess  
 Mr. Harold Lynn Hess  
 Clair and Elizabeth Hess  
 Mr. and Mrs. G. Donald Hess  
 Ms. Pauline E. Hess  
 Hess Brothers Fruit Company  
 Kevin and Rose Hickernell  
 Mr. Timothy F. Hickey  
 Mr. W. James Hicks Sr.  
 Patti and Elvin High  
 Mr. and Mrs. James High  
 Linda and Gerald Hill  
 Karen and Robert Himmelberger  
 Rick and Deana Hinkle  
 Jeff and Gail Hipple  
 Andrew and Jane Hirko  
 Mr. Bruce C. Hirte  
 Ms. Deborah Hivner  
 Ms. Nancy L. Hivner  
 Mr. Michael A. Hivner  
 Milton and Beverly Hoak  
 Joseph and Jane Hoar  
 Susan and Andrew Hodge  
 Ms. Barb Hoehne  
 Joe and Eileen Hoenninger  
 Ms. Marcia Hoffacker  
 Trude Hoffman and Vijay Kothare  
 Pamela and Walter Hoffman  
 Ms. Melissa K. Hoffman  
 Ken and Kathy Hoffman  
 Mrs. Fae L. Hoffman  
 Sandy and Gary Hoffman  
 John and Robin Hogenmiller  
 Mrs. Helena C. Holbriter  
 J. L. Hollinger & Sons, Inc.  
 Ms. Christine A. Hollister  
 Randy and Suzanne Hollowbush  
 Sandra Holsinger and Frank Edgell  
 Dr. Todette LaPrairie Holt  
 Mr. Robert L. Holt  
 Mr. Thomas O. Holtey  
 Blaise and Sheryl Holzbauer  
 Home Association of  
 McSherrystown  
 Homewood Retirement Center  
 David and Karen Homsher  
 Mrs. Irene B. Hondras  
 Mrs. Dorinda H. Hook  
 Debra and Michael Hoover  
 Mrs. Ella N. Hoover  
 Steve and Pamela Hoover  
 Dale and Kelley Hornberger  
 Joyce and Willis Horning  
 Ron and Linda Horning  
 Mrs. Fay L. Horst  
 Mr. Larry E. Horst  
 Mr. Ronald E. Horton  
 Hosh Posh Photography LLC  
 Mr. Robert Hoshour  
 Mrs. Norma L. Hostetter  
 Ms. Suzanne Hostetter  
 Mrs. LuAnn M. Hostetter  
 Mrs. Martha H. Hostetter  
 Ms. Billie L. Hotchkiss  
 Suzanne and Charles Houck  
 Ms. Melissa Houck  
 Don and Paula Howard  
 Phyllis and Mitchell Huber  
 Ken and Maggie Huber  
 Mary and Frank Huber  
 Mrs. Avis A. Huber  
 Thomas and Diane Huber  
 John A. Hubley III and  
 Christina H. Hubley  
 Dr. Gerald G. Huesken  
 Russell C. Hughes III  
 Mr. Joseph W. Hullett  
 Bill and Amy Hulme  
 Mr. James and Alace Humphreville  
 David and Terri Hungarter  
 Ken and Ginny Huntoon  
 Steven and Laura Hurson  
 Mrs. Jane A. Hurst  
 Ms. Caryn Husowech  
 Rev. Dr. Susan Iliff  
 Mr. Eric D. Imhof  
 Mr. Joseph A. Inama  
 Income Store  
 Mrs. Jane L. Ingram  
 Mrs. Ruth S. Iredale

Ms. Marcia M. Ireland  
Rev. Dr. Paul E. Irion  
Gail and Richard Irons  
Richard Irwin and Mary Yannessia-Irwin  
Dave and JoAnn Irwin  
Mr. Alan Isacson  
Ms. Barbara Isett  
Robert and Jane Jackson  
Mr. Theodore C. Jackson  
Ms. Sheila Jacobs  
Mr. Bradley M. Jacobs  
Elizabeth and Kenneth Jacobs  
Ann and Dave Jaeger  
Cynthia and Rodney Jamison  
Esther and Robert Jeffers  
Ms. Johannah M. Jewell  
Ms. Kathleen M. John  
Lester and Elizabeth Johns  
Gary Johnson and Jane Cisco  
Ms. Iris D. Johnson  
Mrs. Denise W. Johnson  
Johoma Services  
Ms. Julie A. Joline  
Mrs. Lois J. Jones  
Dr. Jacqueline L. Jones  
Jones Auto Group  
Ms. Tara L. Jordan  
Dr. Joseph M. Judge  
Dr. Patricia A. Justice-Levin  
K&M Equipment Rentals LLC  
Elliott and Sara Kaebrick  
Priscilla and Jeffery Kaiser  
Bob and Carol Kalenich  
Mrs. Dixie Kaley  
Kenneth and Cynthia Kametz  
Mr. Vasiliki Kanellakis  
John and Laurie Karhan  
Boyd and Pamela Karr  
Mr. Bryan Karsner  
Ms. Jill Katsis  
Doris and Jim Kauffman  
Mr. and Mrs. Dwight Kauffman  
Cindy and Jeff Kauffman  
Jeffrey and Kathleen Kauffman  
Jeffrey and Lisa Kauffman  
Mr. Richard H. Kautter  
Miss Kay Keane  
Mrs. Rodessa A. Keasey  
Eileen and James Keba  
Mr. Glenn E. Keebler  
Alice and Ken Keener  
Ms. Linda H. Keener  
Ms. Brenda E. Keener  
Miriam and John Kegarise  
Mrs. Mary E. Kelchner  
KELL Partners  
Mr. Enos E. Kellenberger  
Jerry and Peggy Keller  
Mr. Richard N. Keller  
Jodi and John Keller  
Mrs. Sarah Kelley  
Mrs. Anita Kelly

Louis and Ruth Kelly  
Thomas and Justine Kelly  
Ronald and Joyce Kelly  
Frank and Sharon Kempf  
Dr. Leigh W. Kendall  
Jeanine and Burnell Kennedy  
Mrs. Leora J. Kennel  
William and Phyllis Kepner  
Mrs. Inge Kepple  
William and Nancy Kern  
Mrs. Theo Kessler  
Ms. Patricia A. Kessler  
Keystone Packard Club  
Greg and Heidi Kile  
Michael and Anne Marie Killen  
Ms. Debra A. Goodling-Kime  
Mr. and Mrs. Craig and Cindi Kimmel  
Mrs. Emma S. King  
Ms. Janice King  
Mr. Samuel E. King  
Ms. Mary Anne King  
Mary and David King  
Ms. Donna L. King  
Ms. Lydia King  
King's Woodwork LLC  
Ms. Pamela Kisner  
Ms. Penny Kittle  
Logan and Cindy Klaassen  
Mr. Kevin K. Klase  
Ms. Lisa A. Klein  
Brook and Elwood Kleinhaus  
Mrs. June Klemm  
Jim and Ginny Kleppinger  
Ralph and Holly Klerekoper  
Kmart  
Mr. Bradley R. Knapp  
Mr. George W. Knapp  
Mrs. Elaine G. Knight  
Garnett and Jean Knippenberg  
Mrs. Mary E. Knopp  
Sjur and Mary Knudsen  
Mrs. Sandra J. Koble  
Mark and Tricia Koch  
Donna and Bill Koch  
Mrs. Diane L. Kohler  
Mrs. Julia A. Kohler  
Mr. Donald M. Kohler  
Joseph and Sandra Kohutka  
Ms. Barbara J. Kolb  
Mrs. Audrey R. Koller  
J. Koller, LLC  
Mrs. Helene M. Konrad  
Ms. Erica L. Kopp  
Ms. Darice Kort  
Carol and Leon Koser  
Ms. Nancy A. Kostas  
KPMG LLP  
Mrs. Holly Kramer  
Albert and Ann Kramer  
Betsy and George Kratzert  
Ted Kraybill and Candy Gilman  
Ms. Matie S. Krebs

Ms. JoAnn Kreeger  
Mr. Ned Kreider  
Ms. Sharyn J. Kreider  
Mrs. Rachel Kreider  
John and Kim Kreider  
Debra and Clair Kreider  
Mrs. Donna E. Kreider  
Mr. and Mrs. William L. Kreider  
Kreutz Creek Valley VFW Post 7045  
Ms. Beth Krishtalka  
Mr. Richard A. Krueger  
Ms. Karen Kuhn  
Michael and Jillian Kuhn  
Diane and Kipp Kulas  
Carl and Cynthia Kulp  
Dr. and Mrs. David G. Kuntz, Sr.  
Paul and Jennifer Kurisky  
Ms. Nancy Kurland  
Ms. Alice Kurtas  
Lloyd and Edie Kurtz  
Ms. Debra J. Kurtz  
Nancy and Tony Kurtz  
Mr. and Mrs. Roger L. Kurtz  
Robert and Vickie Kutz  
Mrs. Gretchen Kuyk  
Ms. Susan M. Kuzniar  
Mrs. Annette E. Kylar  
William and Karen Labiak  
Ms. Mary Lou Lacek  
Nancy and John Lacy  
Harold and Mary LaFontaine  
Ms. Shelly S. Laity  
Jane and Michael Lajiness  
Robert and Patricia Lamb  
Joseph and Tamara Lamoureux  
Lampeter United Methodist Church  
The Lancaster Chamber  
Mrs. Linda M. Lancy  
Mr. and Mrs. Ken Landberg  
James and Barbara Landis  
Mr. Edgar D. Landis  
Mrs. Shirley A. Landis  
Ms. Rhonda Lands  
Mr. and Mrs. Rodney L. Lantz  
Mrs. Mary E. Lantz  
Mrs. Sarah L. Lapp  
Paul and Melissa Lapp  
Mr. Benuel L. Lapp  
Samuel and Sherry Lapp  
Mr. John E. Lapp  
Brian and Roberta LaPrairie  
Mr. Glenn R. Laser  
Cheryl M. Laub  
Ms. Laura Laudenberger  
Tom and Ginny Lausch  
Lawn Equipment Parts Company  
Mr. and Mrs. Byron H. Lawrence  
Tim and Kathleen Leaman  
Ray and Carol Leaman  
Ms. Lucile E. Leard  
Mr. John Edward Lebo III

Mr. Ed and Maribeth Schreder LeBreton  
Paul and Tina Leed  
Kenn and Carolyn LeFever  
Mr. Jeffrey N. Lefevre  
Mrs. Joanne N. Lehman  
Mr. Ryan Lehr  
Lt. Col. (Ret) Roxanne L. Lehr  
Mrs. Betty Jane Leiphart  
Mrs. Wilmajean W. Leister  
Mr. Bradley C. Leisure  
Mrs. Ruth S. Lentz  
Lentz Milling Company  
Leon C. Landis Inc.  
Dr. LaVera Leonard  
Mrs. LaVera S. Leonard  
Ann and Jim Leonard  
Lewes Yacht Club  
Gilberte G. Ley and Vincent A. Tampio  
Ms. Lynn Liddell  
Ms. Linda M. Lilley  
Ms. Ying Lin  
Ms. Janet L. Lind  
Mrs. Deborah A. Lindemuth  
Ms. Margaret S. Lindsay  
Ms. Judith A. Link  
Judy and Dan Lippman  
Little Britain Ag Supply Inc.  
Mr. Jeffrey L. Lively  
Ms. Megan Livengood  
Dan and Miriam Locklair  
Shane and April Loercher  
Mr. Michael R. Loercher  
Mr. Herbert S. Long  
Mr. Brian Long  
Long Valley Fire Company #0  
Fred and Luann Longenecker  
Ms. Maria Longenecker  
Paul and Louise Longenecker  
Ms. Margie Loperfido-Barry  
Mr. Craig Lorah  
Mr. Jamie Loss  
Catherine and Jeffrey Lovett  
Ms. Doreen G. Lowe  
Charles and Doris Lownsbery  
Jim and Mary Lubas  
Mr. John Luciani  
Mr. Stephen D. Ludwig  
Dr. Susan P. Luek  
Jodi and Mike Lupco  
Paul and Iris Luttrell  
Greg and Melanie Lutz  
Mr. and Mrs. Andrew P. Lutz  
Mrs. Frances Lynch  
Ms. Linda B. MacDougall  
James and Marcie Mack  
Glenda and Bill Macnamara  
Mrs. Mary E. Madenspacher  
Carole and Robert Magel  
Kimberly and Rodney Maglaughlin  
Mr. Kevin Magrann  
Mr. Daniel J. Maher

Jim and Mary Ann Mahler  
Ms. Colleen Mahoney  
Mr. Mark J. Malloy  
Mr. K. John Malmberg Jr.  
Joe and Ruth Ann Malone  
Mr. and Mrs. Bill Mandros  
Nancy and Don Manley  
Mr. Paul P. Mann  
Manor Ridge Lions Club  
Dave and Stacey Manwiller  
Rob and Melissa Marchalonis  
Mr. Bernard Marhefka  
Ms. Rose Marie Mariani  
Mrs. Valeria Marinella  
Tyler Marinello and Dana Hogan  
Mr. and Mrs. Frank S. Markosky  
Mr. David Marks  
Mrs. Erana F. Marks  
Marsh & McLennan Agency LLC  
Betty Martin  
Mrs. Ida M. Martin  
Marie and Cloyd Martin  
Mr. Wilmer M. Martin  
Earl and Verna Martin  
Ms. Debra N. Martin  
Mr. Phares E. Martin  
Susan and Roy Martin  
Mrs. Arlene H. Martin  
Jay and Ruth Martin  
Earl and Ruth Martin  
Mrs. Peg Martin  
Rebecca and Patrick Martin  
Donald and Bonnie Martin  
Mr. Earl Ray Martin  
Ms. Susan M. Martin  
Michael and Lynn Martinez  
Dr. Raelene Maser  
Mr. Kim Masterstefone  
Scott and Donna Mathiot  
Barbara Matthie  
Mr. Henry Mauermeyer  
Dennis and Kathy Maurer  
Mrs. Harriet W. Maurer  
Cathy and Mark Mavris  
Ms. Janet F. Mawhinney  
Herb and Teddi May  
Bobbie and Russ May  
Don and Rose Mayers  
Dr. Rebecca McAteer  
Daniel and Lana McCaffrey  
Glenn and Nanette McCarty  
Mr. and Mrs. Robert G. McClure  
E. K. McConkey & Co., Inc.  
Mrs. Donna J. McCreary  
Mr. Richard L. McCue  
Mrs. Helen D. McCurdy  
Mike and Sandra McDaniel  
Chad and Jen McDowell  
Carol and Ronald McElyea  
Terry and Ruth McFadden  
Ms. Rita McFadden  
Mrs. Anne E. McFeely  
Mrs. E. Joy McFerren



Tom and Betty McGill  
Dean and Kim McGowan  
John and Kathryn McKeown  
Steven and Beth McLain  
Mrs. Sheila M. McLain  
John and Deborah McLaughlin  
Kate and Robert McLaughlin  
Mrs. Barbara K. McMinn  
Robert and Lyndell McMullen  
Mr. James B. McMullin  
Stephen and Mary McNamara  
Mrs. Joann I. McOmber  
Mr. G. Scott McQuinn  
Bob and Missy McQuiston  
Tim and Alison Mekeel  
Gregory and Kim Melhorn  
Mr. Skip Mellinger  
Ms. Susan R. Meminger  
Corinne T. Mendinhall and Tara Luby  
Mr. Carlos Mercado  
Mrs. Kim Kluxen Meredith  
Mrs. Sherry Merman  
James and Helene Mershon  
Mr. Lester R. Messner  
Mr. John R. Messner  
Mrs. Ruth Ann Messner  
Ms. Susan M. Metz  
Mr. Steven E. Metzger  
Mr. John K. Metzger  
Earl and Louise Metzler  
Ms. Tracey L. Metzler  
Mr. Donald L. Metzler  
Mrs. Charlene M. Metzler  
Steve and Pat Meyers  
Barry and Linda Michael  
Mr. Panos Michalopoulos  
Herman and Rochelle Migdon  
Nancy Miller  
Mr. David Miller  
Mrs. Phyllis N. Miller  
Mr. Rick W. Miller  
Dominique and Marlin Miller  
Ms. Diane M. Miller  
Mrs. Connie Miller  
Chris and Becky Miller  
Mr. David J. Miller  
Mr. Brett Miller  
Ms. Cindy Miller  
Mr. and Mrs. Christian B. Miller  
Mr. Herb Miller  
Dave and Kay Miller  
Carin and Douglas Miller  
Amos and Susie Miller  
Linda and Robert Miller  
Ms. Regina A. Miller  
Miranda and Cody Miller  
Robbie and Derry Miller  
Ms. Jean C. Miller  
Millersville-Manor VFW Post 7294  
Ed and Kay Millhouse  
Mr. Kenneth W. Mills  
Mr. Fred Minchhoff

Mr. Richard A. Minnich  
Jason and Amy Minnich  
Mr. John P. Minnick  
Mr. and Mrs. Eugene J. Mitchell  
Michael and Karen Mitchell  
Owen and Evelyn Mitchell  
Dave and Beth Mitchell  
Dr. Edwin E. Mohler  
Jodi and Ronald Mongeau  
Scott and Diana Monger  
Ms. Gina Monteleone  
Lisa and Mark Montemuro  
Mrs. Dorothy E. Montgomery  
Ms. Cecilia A. Moore  
Jan and Gene Moore  
Mrs. Jean Y. Morgan  
Milton and Doreen Morgan  
Al and Pat Morrison  
Dave and Doris Morrison  
Ms. Stacey Y. Morrison  
Tamara and John Morrow  
Mrs. Dorothy C. Moser  
Ms. Kathy Moshos  
Mr. Ronald Mountain  
Rosezella and Timothy Mowery  
Carolyn and Edward Moyer  
Ms. Janet V. Moyer  
Mt. Eden Evangelical Lutheran Church  
David and Sonya Mullin  
Clay and Hilma Mummam  
Don and Becky Mummaw  
Denise Mummert and Larry Fisher  
Mr. Kevin Murphy  
Deborah and Paul Murr  
Murry Communities, Ltd.  
Mrs. Laurette Musantry  
Mrs. Susan M. Musselman  
Wilmer and Shirley Musser  
Mary Beth and David Musser  
Lois and William Musser  
Michael and Jean Musser  
Regina and Gerald Musser  
Richard and Ann Musser  
Mrs. Marilyn Muston  
Mr. James E. Mutch  
Mrs. Jean M. Myer  
Sarah and Dennis Myers  
Barry and Sharon Myers  
Ms. Virginia L. Myers  
James and Denise Myers  
David and Rachel Myers  
William and Lynn Myers  
Edwin and Joanne Myers  
Tim and Peggy Myers  
Martin and Cathy Myers  
Mrs. Bonnie Myers  
Mrs. Linda M. Myers  
Mrs. Julie A. Myers  
Mr. Larry H. Mylin  
Jodie and Stuart Mylin  
Dean Mylin and Susie Anderson  
Peggy and Samuel Nana-Sinkam

Kyle and Dr. Kelly Nardella  
Kim and Tony Nardella  
Mr. Guido Nardini  
David and Trish Nasky  
National Postal Mailhandlers Local #308  
Ms. Mary Ann Nauman  
Ms. Jane E. Nauman  
David and Laura Neff  
Joel and Diane Neff  
Ms. Sandra Neff  
Leslie and Pam Neidig  
Judy and Allen Neifert  
Ms. Lisa R. Nelson  
Ms. Jane M. Nelson  
Mrs. Conrad W. Nelson  
Nelson Mullins Riley & Scarborough, L.L.P.  
Ms. Loretta Ness  
Mrs. Carol A. Nester  
Mrs. Tina A. Nevin  
Ms. Sylvia Newcomer  
Stanley and Carolyn Newcomer  
Ms. Nancy R. Newman  
Ms. Kathryn M. Neyer  
Mr. William A. Nichols  
Mr. and Mrs. Ronald E. Nickel  
Mr. Andrew Nickel  
Ms. Jennifer D. Nisenoff  
Wilmer and Ruth Nissley  
Clayton and Martha Nissley  
Jacqueline B. Nissley  
Wilma and Harold Nixon  
Bill and Elena Nobile  
Ms. Patricia A. Nolan  
Mrs. Lorraine E. Nolan  
Becky and Herb Noll  
Larry and Esther Noll  
Ms. Bonnie J. Nolt  
Ms. Helen L. Nolt  
Ms. Mary Norman  
NovaCare Occupational Health Services  
Mr. Ryan Null  
Mrs. Pamela S. Null  
Jeff and Candi Null  
Ruth and Peter Nunn  
Donald and Faye Nyce  
Mrs. Betty J. Oatman  
Gordon and Gloria Ober  
Ms. Evelyn M. Ober  
Mrs. Sherry O. Ober  
Ms. Elizabeth A. Ober  
Faye and John Oberholser  
Phyllis and Fred Oberholzer  
Mr. Kevin Oberholtzer  
Ms. Mary Ann O'Brien  
Ocean Pines Association, Inc.  
Dr. G. Thomas O'Connor  
John and Candace O'Donnell  
Gerald and Dorine Offenbaker  
Mr. Vincent P. O'Hearn  
Deacon and Mrs. Michael J. Oles

Mr. and Mrs. Edward Oleskowitz  
Mr. Arthur A. Olsen  
Ms. Julie Oman  
Mrs. Donna O'Reilly  
Damaris Ortiz and Joseph Fiorentino  
Mrs. Joan A. Otto  
Ellen and John Overbeck  
PA Recreation Vehicle and Camping Association  
Kelly and Alex Pabon  
John and Sharron Pacana  
Packaging Corporation of America, Inc.  
Mr. Robert J. Pagano  
Richard and Sue Palackas  
Mrs. Irma Palmer Resanovich  
Ed and Brenda Palsgrove  
Mrs. Doris J. Pannell  
Ms. Nancy J. Papac  
Ms. Lori Parenty  
Mrs. Jill E. Parker  
Parker Hannifin  
Samuel and Paige Parks  
Ms. Maria H. Paschke  
Mr. Demetrios Paspalaris  
Passmore Service Center, Inc.  
Mr. James J. Patterson  
Mrs. Ruth M. Patton  
Mr. Ronald K. Patton  
Mrs. Margaret M. Paulson  
Mr. Dan Pavord  
Paige Payne and William Burns  
Mrs. Mary Ellen Peachey  
Rodney and Deborah Peachey  
Linda and Dick Peacock  
Jeff and Nancy Pearsall  
Dr. Raymond E. Peart  
Mr. and Mrs. Jeffrey Peeling  
Ms. Laurie Peer  
Scott and Mary Peiffer  
People 2.0  
Ms. Crystal Perdue  
Ms. Kathryn Persch  
Mrs. Carolyn R. Peters  
Mrs. Claire L. Peters  
Barbara and Wayne Peters  
Mr. William E. Peters  
Mr. M. Richard Peters  
Ms. Alice Peterson  
Mr. and Mrs. Bill Petrarco  
Mr. Edgar Petrisek  
Mrs. Barbara M. Pettinos  
Jeff and Judy Pfeiffer  
Fred and Kathleen Pflieger  
Harry and Nancy Pharoah  
Jack and Vesta Harman Phiel  
Cynthia and Emory Phillips  
Pilgrim Mennonite Conference  
William and Pamela Plasterer  
Nadine and Gaylord Poling  
Larry and Pam Pollack  
Mrs. Joan H. Pollock

Mrs. Jeanne A. Pontius  
Post Acute Medical LLC  
Postal Advocate, Inc.  
Chuck and Stephanie Poulos  
Mr. William E. Powell  
Power - Kunkle Group, Inc.  
Rob and Pat Powl  
Precision Solutions, Inc.  
James and Linda Kay Pressley  
Miss Candace Prewitt  
Dr. and Mrs. Albert C. Price  
Walt and Mary Ann Price  
PrimusLabs  
Mrs. Mildred Profeto  
Maryann and David Przekurat  
Mrs. Mary Kaye Pulkrabek  
Frank and Jeanne Purtell  
Fletcher and Carolyn Pyles  
Ms. Lisa Quaglieri  
Quarryville Elementary School  
Bernice and Steven Quesenberry  
Mr. Eli Quinters  
R/W Connection, Inc.  
Mrs. Henry Raab  
Robert and Rebecca Rabb  
Joe Racette  
Scott and Marcella Radcliffe  
Mr. Terry Radcliffe  
Mr. Joseph R. Raff  
Ms. Sharon Rakos  
Herman and Anne Ramig  
Mrs. Lillian M. Ramsay  
Rick and Vanessa Rankin  
Mrs. Michelle L. Rappaport  
Mrs. Judith A. Raugh  
Mrs. Kathy Ray  
Ms. Sally Ann Rebman  
Mrs. Beverly Rebman  
Harlan and Bernie Redcay  
Mrs. Shirley A. Redcay  
Crystal and Jonathan Reed  
Barry and Brenda Reed  
Ms. B. Marie Reeder  
Mr. Ronald L. Reeder  
Mr. James D. Reese  
David and Kamala Reese  
Ms. Dora M. Reese  
Jim and Becky Reeve  
Mac and Jane Reeves  
Jeff and Ellen Regan  
Kevin and Cynthia Regel  
Mr. Jake Regennas  
Gary and Sandra Rehm  
Elizabeth and Charles Rehm  
Mrs. Geraldine S. Rehm  
Ms. Suzanne K. Rehm  
Douglas and Marcia Rehrer  
Mr. Robert Reidenbaugh  
Catherine Reider  
Jerry and Denise Reifsnyder  
Harlan and Patricia Reigh  
Constance J. Rempe  
Barry and Joan Renner

Ms. Ellen M. Reno  
Rental Country Inc.  
Rentokil North America, Inc.  
Research America  
Claessa and George Resh  
Edwin and Linda Resser  
Mrs. Mary Jane Rettew  
RETTEW Associates, Inc.  
John and Pat Reuter  
Brad and Nan Reynolds  
Mr. Jack Reynolds  
Jay and June Reynolds  
Lynda K. Reynolds  
Reynolds Enterprises, Inc.  
Barry and Sheila Rhoads  
Mr. Harold S. Rhodes  
Jeanette and Vernon Rice  
Ms. Leslie S. Richards  
Mrs. Marsheila Richter  
Rich-Tomkins Company  
Ms. Cherylann Rider  
Mr. James E. Riedy  
Mrs. Lydia P. Riehl  
Ms. Lora Ries  
Mr. Thomas W. Riffert  
Mrs. Anne M. Riley  
Mr. James J. Riley  
Ms. Kimberly A. Rinaldi  
Charles and Susan Rineer  
Mrs. Donna L. Rinehart  
Kim and Steve Risk  
Mr. Carl H. Risser  
Mrs. Lois Anne Risser  
Mr. Robert G. Ritchie  
Jessica Rivers and Jeffrey Hardin  
Ms. Hellen Rizos  
Ms. BethAnn Robertiello  
Mr. and Mrs. William L. Roberts  
Jim and Sharon Roberts  
Mr. Kenneth Robinette  
Ms. Jennifer Roche  
Craig and Dianne Roda  
David and Mary Kay Roda  
Sandy and Eric Rodenhauser  
Mr. Darwin J. Rodgers  
William and Cathy Rodruan  
Sally Rohrer  
Charles and Kathryn Rohrer  
Mike and Shelly Rohrer  
Rohrer Photography  
Mrs. Nancy M. Roland  
Dennis and Peggy Ann Roland  
Ms. Jessica G. Roney  
Ms. Linda M. Root  
Peggy and Rafael Rosario  
Timothy Roschel and  
Tracey Wheatley  
Mr. Tony F. Roschel  
Mrs. Sally B. Rosenthal  
Ross Technology Corporation  
Mr. L. Douglas Rossi  
John and Cheryl Rossi  
Jerry and Polly Rote

Mrs. Nancy M. Rote  
Dr. Gerald and Carla Rothacker  
Doug and Kristal Rothrock  
Ron and Rita Rottmund  
Rottmund, Cheek, Hyle & Co., Inc.  
Jerry and Sherry Rousseau  
Molly and Michael Rowen  
Mr. Haskell C. Royer  
Jay and Linda Royer  
Mr. Michael D. Royer  
Karen and Brian Royer  
Eric and Tina Royer  
Royer Pharmacy  
Ms. Wenda K. Ruch  
Geneva Rufenacht and  
Mel Thomas  
Ms. Karen E. Ruhl  
Keith and Tracey Rupp  
Ms. Kelly L. Ruppert  
Dianne and Craig Russell  
Mr. and Mrs. Michael Ruzsak  
Carol and David Ruth  
Ms. Lynn Ruths  
Karen and Roger Rutter  
Barbara and Bruce Ryder  
Sageworth Trust Company  
David and Eddie Sakowitz  
Mr. John F. Salony  
Ms. Jennifer Saltzer  
Mr. Charles J. Samas  
Ms. Mary M. Sample  
Mrs. Marianne M. Sampson  
Robert and Lisa Sanders  
Marlene and William Sanders  
Sanders Saws & Blades, Inc.  
Ronald and Alice Sandmeyer  
Rod and Tracey Sandmeyer  
Sandmeyer Steel Company Plant  
and Office Employees  
Carl and Grace Sandoe  
Joseph and Mandy Sands  
Anthony and Catherine Santopolo  
Mrs. Marie P. Sapone  
Jack Sapper  
Ginny and Jay Sauder  
R. W. Sauder, Inc.  
Dick and Charlotte Savicky  
Mr. Charles A. Sawicki  
Denise and Santo Scalzo  
Mr. Jack W. Scanlon  
William S. Schachtel  
George and Anne Schaefer  
Michael and Helaine Schaller  
John and Beverly Schantz  
Mrs. Dorothy Anne Schanz  
James Scheaffer and Linda Sarley  
Mrs. Sandra S. Scheffey  
Cheryl and Mark Scheid  
Ms. Arlene Scheingraber  
John and Elizabeth Scheldrup  
Mr. Dean Scheurich  
Mr. Edward M. Schiesser  
Dr. and Mrs. Steven K. Schirk

Ms. Amanda Schlegel  
Allison and Matthew Schlegelilch  
Schmalz Inc.  
Ruby and Mark Schmidt  
Cleta and Bob Schmitt  
Mr. Jeffrey Schmoel  
Marsha and James Schmuck  
Merle and Donna Schnee  
Mrs. Eva M. Schneider  
Dorothy and Martin Schober  
Mr. James Schoch  
Richard and Karen Schreder  
Mrs. Gail G. Schroeder  
Jerry and Linda Schroll  
Scott and Allison Schucker  
Ms. Maria T. Schulz  
Natalie and Sam Scicchitano  
Marvin and LaVonne Scott  
Mrs. Kathryn G. Seaber  
Ms. Janice H. Search  
The Secant Group  
Mr. Tyler Seecof  
Seed Consultants (Doebler's  
Hybrids)  
Lucinda and Gregory Seitz  
Mr. Richard L. Seldomridge  
Stacie and Mark Self  
Gary and Susan Sensenich  
Mrs. Audrey L. Sensenig  
Robert and Cynthia Sensenig  
Mr. Amos C. Sensenig  
Mike and Deb Sensenig  
Eileen and Robert Sentz  
Mr. Robert E. Sevison  
Mr. Albert E. Shaffer Jr.  
Ms. Shirley A. Shaheen  
Roger and Suzann Shallenberger  
Mr. and Mrs. David Shank  
Ms. Roberta L. Shank  
Mrs. Deborah L. Sharp  
Tom and Jewel Shaub  
Mr. Melvin L. Shaub  
Mrs. Deborah C. Shaubach  
Mr. Stephen Shaver  
Robert and Nadine Shaw  
Rev. Martha B. Sheaffer  
Mrs. Mary Jo C. Shearer  
Mrs. Mary E. Shearer  
Jean M. Sheehan  
Sheetz Funeral Home, Inc.  
Mrs. Mildred N. Shellenberger  
Michael and Sharon Shelly  
Mr. and Mrs. Gary L. Shelly  
Ms. Rochelle Shelly  
Kenneth and Janice Shenenberger  
Morgan Shenk  
Thomas and Rochelle Shenk  
Roberta and Dennis Shepherd  
Mr. Harry J. Shepler  
Mrs. Martha J. Sherlaw  
Sherman L. Burkholder Painting  
Mr. Brian D. Shettel  
Marvin and Wanda Shimer

Joyce and Roger Shinton  
Roy and Joann Shipman  
Ms. Andrea Shirk  
Fay and Galen Shirker  
David and Margaret Shishim  
Robert and Daenett Shivery  
Mr. J. Richard Shoemaker  
Mr. Paul W. Shope  
Ms. Michele D. Short  
Mrs. Sophia W. Shreiner  
Robert and Susan Shue  
Suk Shuglie  
Mrs. Jenny Shuler  
Mr. Tim Shultz  
Leigh and Kathleen Shuman  
Mrs. Joan W. Shumate  
Rev. Debra A. Sickles  
Thea and Paul Sieber  
Edwin and Salome Sieber  
Marianne and Nick Siecko  
Joan and Jay Siegrist  
Edith Sielsch  
Priscilla and Darrel Siesholtz  
Ms. Beth Sigley  
Melissa and Kevin Sikorski  
Ms. Annamary Sikorsky  
David and Jennifer Silbert  
Peter and Terri Silvester  
Pamela Simmons and  
Joseph Suprik  
Donald and Carol Simmons  
Mr. Barry Simpson  
Ms. Ellen M. Simpson  
Sinon Farms, Inc.  
Mrs. Sheryl L. Sipe  
Mr. M. Richard Skethway  
Mr. Tom Skotidas  
Robert and Linda Slade  
Ms. Audrey Slater  
Catherine and Joe Slavics  
Eugene and Jill Sload  
Mr. Stephen J. Sloboda Jr.  
Dr. and Mrs. Andrew C. Sloyer  
The Slumbering Groundhog  
Lodge of Quarryville  
Stephen and Valory Slymon  
James and Mary Ellen Smallwood  
Kelly and Edward Sminkey  
Stephanie and Scott Smith  
Lara and Bob Smith  
Malinda and Steve Smith  
Byron and Donna Smith  
Mrs. Erma J. Smith  
Mrs. Virginia M. Smith  
Ms. Doris L. Smith  
Scott and Gloria Smith  
Mr. and Mrs. Colin S. Smith  
Gail Smith and Jeff Shoff  
Leonard and Joanna Smith  
Mr. Robert G. Smith  
Paul and Judy Smoker  
Smoketown Family Dentistry  
Charles and Cheryl Smuck

Eli and Annie Smucker  
Lori and Lawrence Smyser  
Mrs. Ethel H. Snavely  
Gordon and Romaine Sneath  
Lawrence and Jeanne Snyder  
Angela and Daniel Snyder  
Mark and Sharon Snyder  
Snyder & Mylin Septic Services  
Scott and Mary Sourber  
Diane Southworth and  
Patricia H. Lewis  
Mrs. Jean M. Sowers  
Gary and Geraldine Spangler  
Michael and Carole Spangler  
Sparklers Bowling League  
James and Kathleen Spencer  
Mrs. Kendra Spire  
LTC Shirley Spirk (USA/Ret)  
Ms. Janet E. Spleen  
Mr. William Sponaule  
Mr. Robert D. Spotts  
Lynn and Johan Spotts  
E. Kay Spritzer  
St. Matthew Evangelical Lutheran  
Church  
Steve and Sue Stamm  
Rick and Debbie Stamm  
Joe and Gladys Stanisic  
Robert and Kathleen Stanley  
Mrs. Martha E. Stauffer  
Ernest and Deborah Stauffer  
Mrs. Corena A. Stauffer  
Mr. and Mrs. Richard G. Stauffer  
Bruce and Susan Stauffer  
Stauffers of Kissel Hill  
Shawne and Ervie Steele  
Mrs. Darlene Steely  
Mrs. M. Jean Steffy  
Mr. Richard G. Stepanchak  
Mr. and Mrs. Ted A. Sterner  
Maurice and Julia Sterner  
Richard and Jackie Steudler  
Terry and Jerry Stevens  
Connie and George Stevenson  
Linda and Terry Stewart  
Mr. Thomas E. Stewart  
Carol and James Still  
Stock and Leader,  
Attorneys At Law  
Pat and Steve Stockwell  
Mr. Dike S. Stoe  
Ms. Katie Stoltzfoos  
Leroy and Fannie Stoltzfus  
Reuben and Susan Stoltzfus  
Mr. Steven K. Stoltzfus  
Mr. Jonathan A. Stoltzfus  
Glen and Kim Stoltzfus  
Mr. Amos M. Stoltzfus  
Omar and Priscilla Stoltzfus  
Ms. Donna R. Stone  
Art and Libby Stoner  
Thomas and Renee Stoner  
Stonerook & Co.

Mr. Ronald E. Stough  
June and Jeffrey Stratmeyer  
Ms. Deborah A. Strawn  
Mrs. Erma M. Strawser  
Mr. Andrew J. Strebel  
Mr. Tim Strickler  
Mrs. Wanda J. Strohl  
Eileen Studholm  
Carolyn and John Stump  
Mrs. Doris K. Summers  
Ms. Gina Summers  
Mr. Thomas S. Summers  
Sundown Lounge, Inc.  
Susquehanna Truck Service, Inc.  
John and Lauren Sutera  
Kathleen and Michael Suydam  
Mr. and Mrs. Robert Swanson, Jr.  
John and Jennifer Sweigart  
Vicki and Carl Sweigart  
Mr. Daniel S. Sweigart  
Mr. Brian W. Sweigart  
Bobby and Debbie Swindall  
Mrs. Doris M. Swinehart  
Edwin and Donna Switzer  
Ms. Vicki L. Sylvester  
Synod of the Trinity  
Michael and Linda Sywulak  
Tanger Outlet Federal Building  
Services/Maintenance Staff  
Tangles Salon  
W. Scott and Jan Tanguy  
Tapestry Technologies, Inc.  
Kenneth I. Taylor Ph.D.  
Devin O. Taylor  
Mr. and Mrs. V. Taylor  
Taylor Geoservices  
TCW Computer Systems, Inc.  
Ms. Kelli Teel  
Edwin and Bonnie Teets  
Mr. Justin M. Tekely  
Mrs. Joan T. Teller  
Toby and Jennifer Tennis  
Mrs. Beth A. Terry  
Mark and Jeanne Terwilliger  
Anne and John Thayer  
Thermal Solutions Products, LLC  
Drs. Adam and Joan Thode  
Ms. Estelle J. Thomas  
Ms. Christine Thomas  
Ms. Donna D. Thomason  
Ms. Kathy V. Thompson  
Mrs. Julie Thompson  
Mrs. Pamela Thompson  
Ms. Margaret K. Thompson

David and Judith Thurmon  
Ms. Deborah A. Tillman  
David and Elaine Tirado  
Tire Consultants, Inc.  
Mr. Geoffrey Todebush  
Ms. JoAnn L. Tomb  
Mrs. Jennie M. Tome  
James and Laurel Toshack  
Mrs. Susan I. Trafford  
James and Babs Tribble  
Mrs. Joyce A. Trigg  
Mr. Louis J. Trinchere  
Judy and Steven Troop  
Dave and Darlene Troutman  
Mr. Jeffrey C. Trowbridge  
Connie and Ivan Troxel  
Bob and Kay Troxell  
Ms. Anna Mae Tschudy  
Mr. John I. Tschudy  
Bob and Bonnie Tucci  
Tuckahoe Acres Camping  
Resort Inc.  
Patti and Jack Turpin  
Todd and Desirae Tyson  
U-Haul Moving & Storage  
Tab Uhrich  
Mrs. Dorothy L. Ulmer  
Barbara Underwood and  
David Patria  
United Coolair Corporation  
Blaine and Kathy Uplinger  
Ms. Susan M. Ursprung  
Karl and Nancy Usner  
George and Lori Valentine  
Mrs. Linda H. Valmonte  
Beverly and Ray Van Ausdal  
Mrs. Regina K. Varallo  
Mr. Don Varner  
Mr. Michael S. Vasko  
Dot and Tony Vaudo  
Mary Holmes and Dave Vaughn  
The Vieni Vento Family  
Mrs. Betty Jane Vickers  
Ms. Maria A. Vigliano  
Village Realty  
Alfred and Marlene Vitolo  
Andrew and Nancy Vogel  
Wacker Brewing Company  
Mrs. Dorothy D. Wadsworth  
Mr. Jeffrey J. Wagner  
Ms. Joyce Wagner  
Mr. Elmer L. Wagner  
Karen and Randy Wagner  
Esther and Eric Wahlberg

Bill and Marty Waldrop  
Barry and Sharon Wallace  
Ms. Carol Ann Waller  
Dawn and Wayne Wallick  
Mrs. Jane L. Walp  
Glenn and Caroline Walsh  
Mrs. Leighann Walsh  
Jim and Pat Walsh  
Mrs. Marguerite K. Walters  
Ms. Diana Waltmyer  
Tom and Michiyo Walton  
Walz Group P.C.  
Rose and Mark Ward  
John and Patricia Warren  
Ms. Theresa M. Washington  
Dr. and Mrs. Bruce C. Waskowicz  
Jennifer and Keith Watkins  
Ms. Alicelynn Watson  
Tony and Elizabeth Watts  
Dr. and Mrs. Steven F. Waugh  
Mrs. Claudia A. Way  
Mrs. Gladys Weachter  
Mr. Dennis L. Weachter  
Brad and Julie Weaver  
Ms. Joann B. Weaver  
Kenneth and Marilyn Weaver  
Mr. Titus M. Weber  
Mr. William H. Weber  
Michael and Anita Weber  
Charmayne and Dave Webster  
Nancy and Carl Weicksel  
Joe and Sandy Weidel  
Mrs. Jessica A. Weidenhammer  
Phillip and Kimberly Weidman  
Mrs. Priscilla A. Weidman  
Eric and Diane Weis  
James and Alexandra Weisensale  
Ms. Linda Weisman  
Mrs. Janet A. Weisser  
Ms. Cathy A. Welk  
Mrs. Joan F. Welk  
Mr. James Wellborn  
Mrs. Bettie C. Welsh  
Jim and Kathy Jo Wenger  
Melvyn and Martha Wenger  
Richard and Carol Ann Wenrick  
Dennis and Carol Ann Wenrick  
Ms. Angie Wentz  
Mrs. Lorraine Wenzel  
Mr. Lee Wermuth  
Melissa and Mark Werner  
Joseph and Sherrill Wesolowski  
Paul and Judy Westcott  
Mr. Chuck Whinney

Ms. Connie J. Whitacre  
Ms. Megan Whitaker  
Mr. Jack L. Whitcomb  
Mr. James W. White  
Charles and Dolly White  
White Rose VFW Post 556  
Ms. Lydia Whitefield-Stahl  
Bill and Phyllis Whitesell  
WHTM ABC-26  
Wicker Imports  
Mr. David E. Wiederrecht  
Mrs. Ann M. Wiernicki  
Mrs. Elinor K. Wiest  
Michael and Sharon Wiggins  
Wiggins Asphalt Paving, Inc.  
Mr. Craig Wigglesworth  
Lisa Wilde  
Wilde Funeral Home  
Mr. Steven C. Williams  
Mr. and Mrs. Terry R. Williams  
Ms. Lois M. Williams  
Richard and Elizabeth Williams  
Chuck and Ruth Ann Williams  
Clarence and Pamela Williams  
Ronald and Linda Williams  
Willow Bend Farm at  
Hunter's Glenn  
Ms. Jennifer A. Wilson  
Doug and Rita Wilson  
Ms. Lynda S. Wilson  
Mr. Lew B. Wilson  
Mr. James J. Wimer  
Dave and Nancy Wimer  
Ms. Jennifer C. Wimer  
Mrs. Virginia M. Windham  
Dr. Elva Joan Winter  
Ms. Shirley A. Winters  
Donald R. Wireback  
Joyce and Richard Wise  
Mrs. Mary Ann Wise  
Ms. Marjorie Wissler  
Paul and Kathleen Wissler  
Ms. Gloria L. Wissler  
Susan H. Witmer and Colin Martin  
Mr. and Mrs. Carl J. Witmeyer, II  
Mrs. Judith A. Witters  
Clair and Jane Witwer  
Mr. and Mrs. Frank A. Woelfling  
Mr. and Mrs. James P. Wohlsen  
Wohlsen Construction Co.  
Joseph and Ann Wolf  
David and Karen Wolf  
Ms. Debra M. Wolfe  
John and Sandy Wolfe

Suzanne and Jack Wood  
Mr. Robert L. Woodson  
Mrs. Erma J. Work  
Mrs. Marsha E. Worthington  
Tina and Raymond Worthington  
Gwenda and Keith Wright  
Wright Manufacturing, Inc.  
Wrightsedale Baptist Church  
Wrightsville Social Club  
Mr. Paul Wrubel  
Ms. Sandra M. Wynder  
Kevin and Janet Yalch  
Yeager Supply, Inc.  
Mr. Paul J. Yeagin  
Mrs. Sharon K. Yelk  
Mrs. Susan M. Yingst  
Ms. Deborah J. Yoder  
Mr. Howard Yoder  
Mr. Pius L. Yoder  
Peter and Connie York  
Harry and Carol Yost  
Lee and Jean Young  
Damian and Mey Young  
Charles and Patricia Younger  
Ms. Linda D. Younger  
Mr. Jeffrey I. Youngquist  
Mr. Norman G. Yunginger  
Ms. Jean Zahn  
Ms. Linda M. Zarnett  
Rae and Glenn Zartman  
Linda and Jim Zedan  
Ms. Kathy J. Zehr  
Mr. Dale L. Zeiders  
Ms. Linda Zeigler  
Carolyn and Paul Zeiset  
Michael and Anne Zell  
Mr. John C. Zepp III  
Mr. and Mrs. Mike Zercher  
Mark and Jane Zeswitz  
Mr. and Mrs. Robert E. Ziegler  
Mrs. Mary Ella Zimmerman  
Mr. and Mrs. Nelson Zimmerman  
and Judy Breighner  
Ms. Jessi Zimmerman  
Mrs. C. Sandra Zimmerman  
Mr. and Mrs. Shane W.  
Zimmerman  
Mrs. Jerrieann Zinn  
Mr. Jonas Z. Zook  
Mr. and Mrs. Elam L. Zook  
Ms. Catherine Z. Zukowski

